

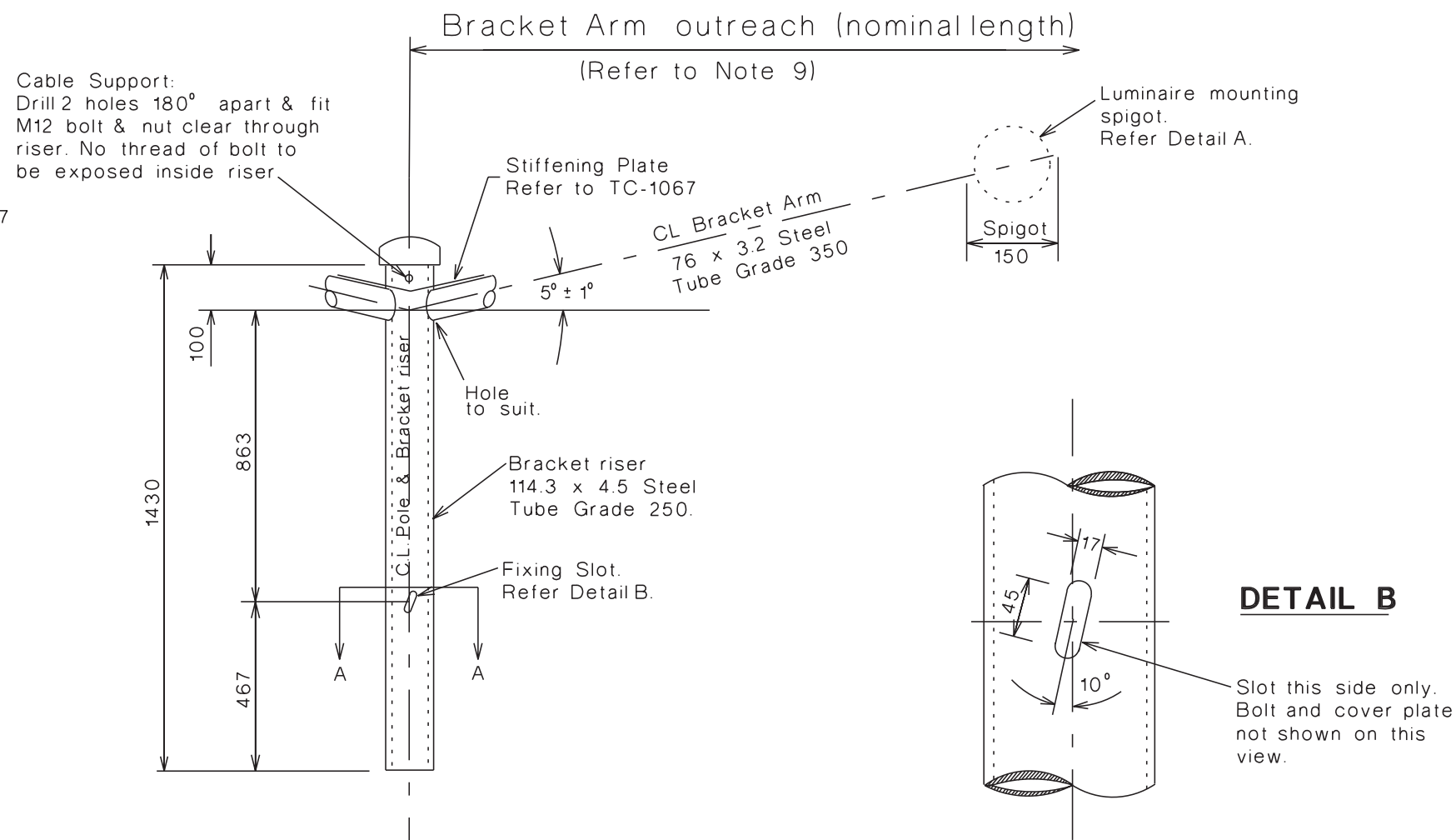
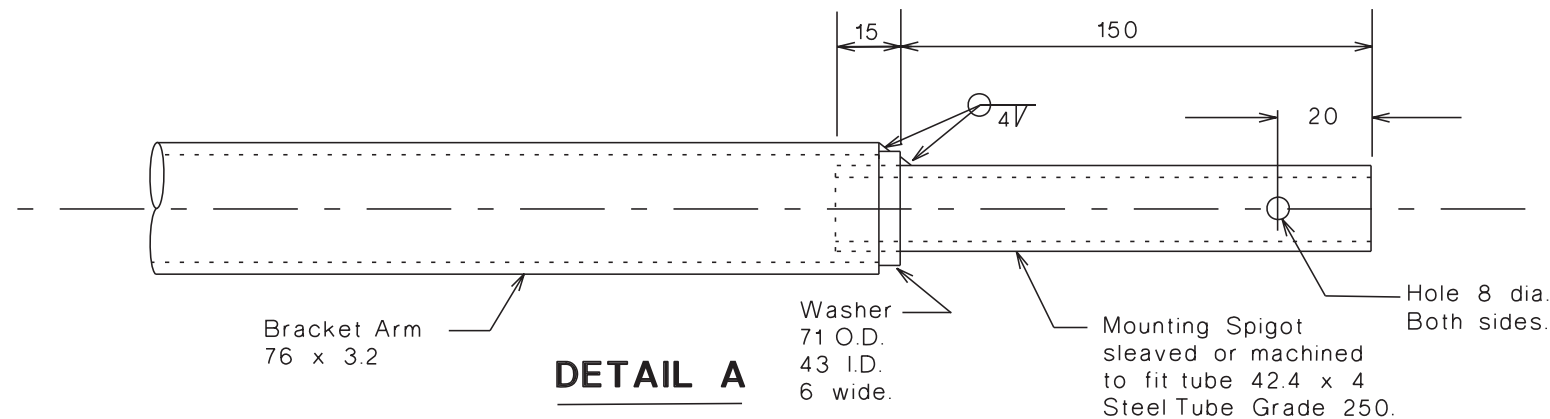
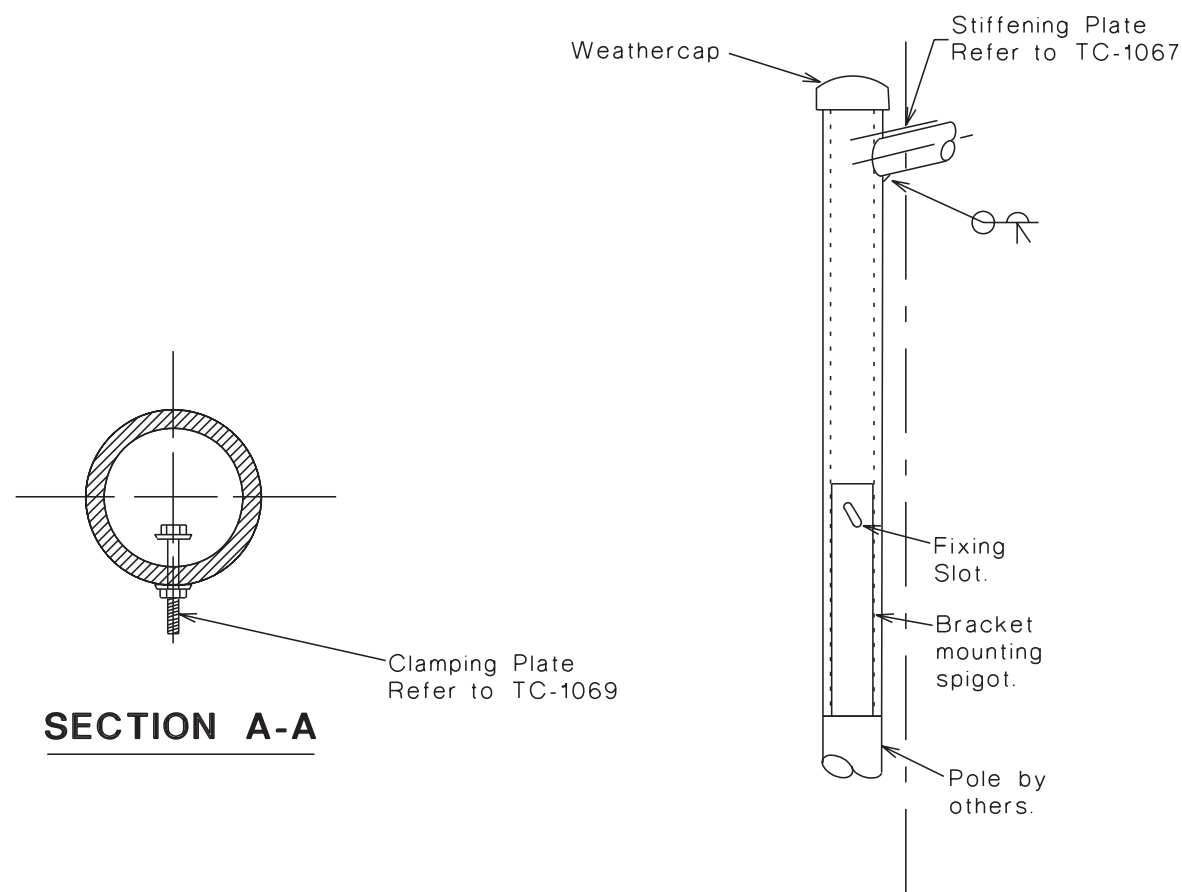
VicRoads (DTP) Standard Drawings

Street Lighting (1050-1099)

Drawing No.		Title
TC-1060		Withdrawn
TC-1061	D	<i>Bracket Single & Double Type 2 – currently under review</i>
TC-1062	D	Distribution Box – Foundation Detail
TC-1063		Withdrawn
TC-1064	B	Impact Absorbing Pole Assembly – Ground Set Mounted
TC-1065	E	Slip Base Pole Assembly – Ground Set Mounted
TC-1066		Withdrawn
TC-1067	A	<i>Bracket - Single & Double -Stiffening Plate– currently under review</i>
TC-1068		Rigid Street Lighting Pole-Base Section
TC-1069		<i>Clamping Plate - Pole To Spigot– currently under review</i>
TC-1070	A	Cable Support for Outreach
TC-1071	C	Impact Absorbing Pole – Electrical Installation Details
TC-1072	C	Slip Base Pole – Electrical Installation Details
TC-1073	B	Slip Base Pole – Electrical Disconnect Details
TC-1074	B	Distribution Cabinet Type-2 – Foundation Detail
TC-1075	A	Distribution Cabinet Type-2 – Rag-bolt Assembly
TC-1076	A	Pole Location Identifier
TC-1077		Typical Location Numbering Arrangement
TC-1078		Pole Labe Installation Location

NOTES:

- 1. Remove all sharp edges and burrs.
- 2. All tubular work shall comply with AS1163 & AS1074.
- 3. All welding shall comply with AS/NZS1554.1
Category SP, using E41XX electrodes.
- 4. All parts to be galvanised after fabrication to AS/NZS4680.
- 5. All pipe threads shall comply with AS1722 - Part 2.
- 6. Install cable support after galvanising.
- 7. Weathercap to TC-1108.
Install weathercap after galvanising.
- 8. Bracket outreach - length as specified,
up to 5.0 metres maximum for 10.5 kg luminaire
or 4.5 metres maximum for 15 kg luminaire.
- 9. All dimensions are in millimeters
- 10. Bracket to comply with relevant power company
standard requirements.
- 11. Dimensions are common to both single & double
outreach brackets unless otherwise stated.
- 12. Unless otherwise specified, all steel shall be Steel Tube
Grade 250 and Grade 350 for bracket arm.
- 13. All welds shall be 6mm fillet unless otherwise specified.
- 14. Completed bracket assembly shall be
clearly labelled "Type 2".
- 15. See TC-1067 for detail of Stiffening Plate.



E			
D	SB	19/9/06	REFERENCE TO SEC DELETED
C	RS	6/01	AS/NZS STANDARDS UPDATED
B	RS	11/6/97	WELDS UPDATED
A	RS	4/6/97	STIFFENING PLATE ADDED
AMEND.	Appd.	DATE	AMENDMENTS

GENERAL NOTES / CROSS REFERENCES
UNSPECIFIED DIMENSIONS ARE IN mm.

ASSOCIATED DRAWINGS:
TC-1060, TC-1067, TC-1108,
TC-1069, TC-1070

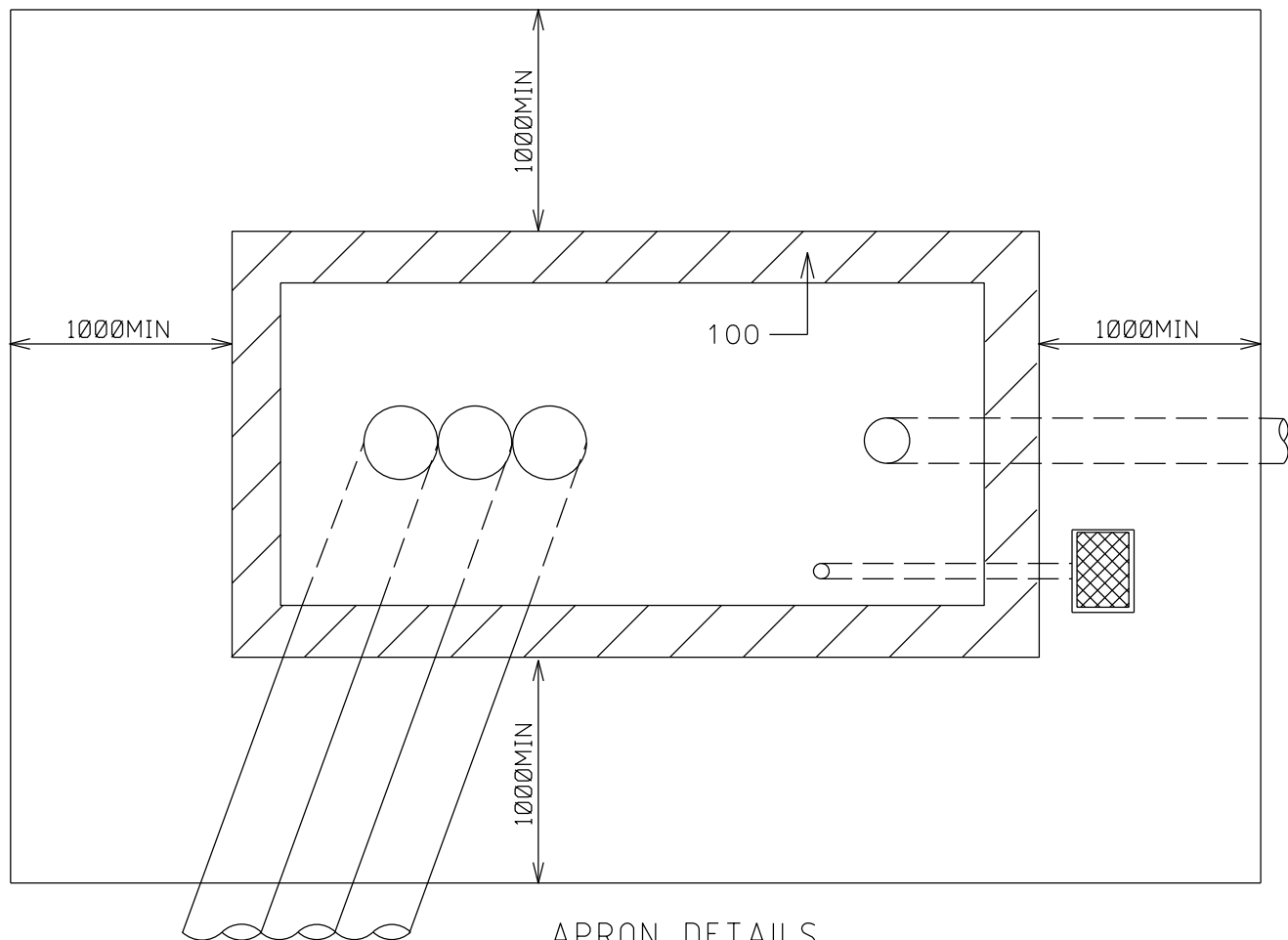
vikroads

INTELLIGENT TRANSPORT
SYSTEMS GROUP

STANDARD DRAWING

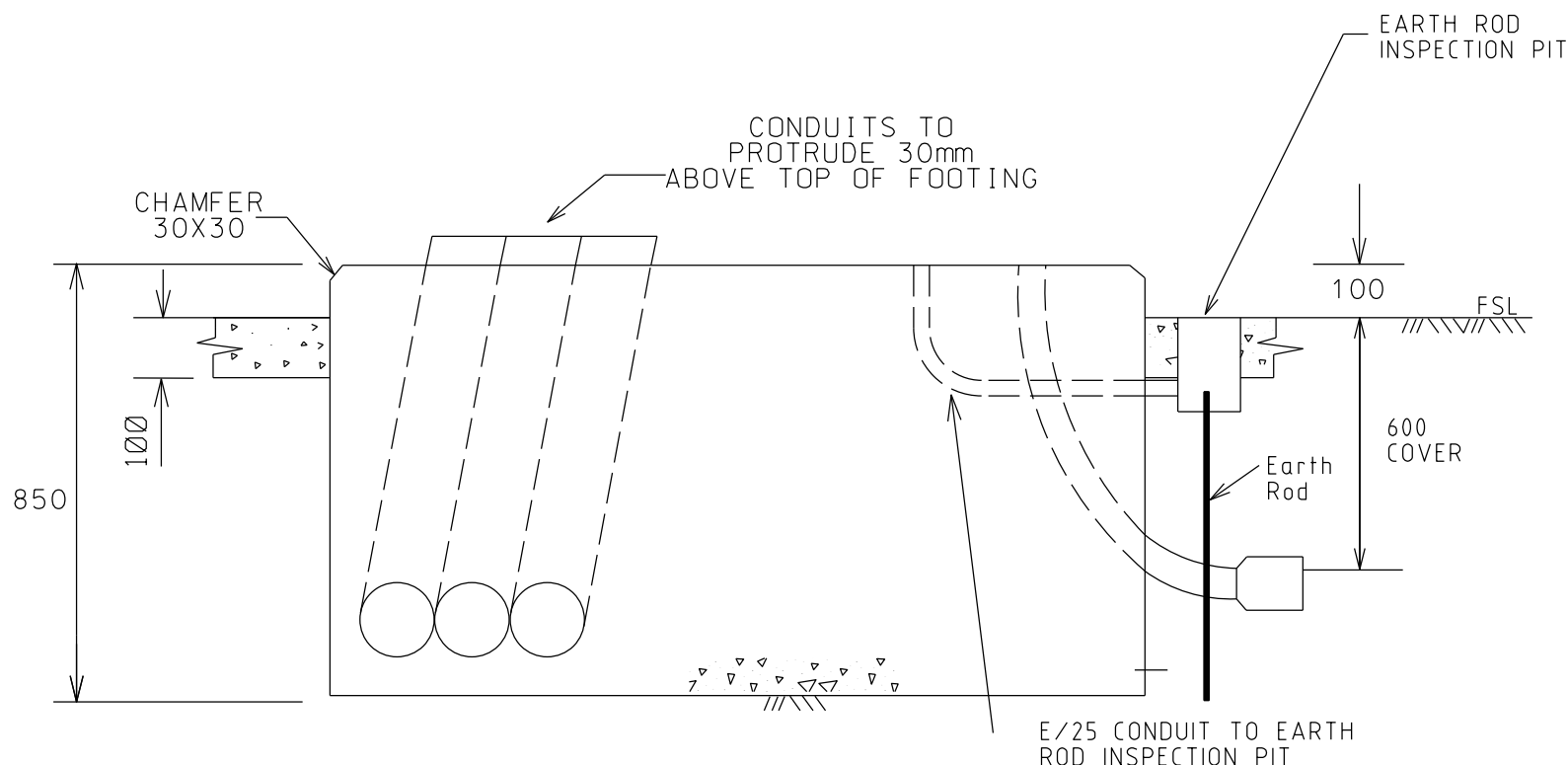
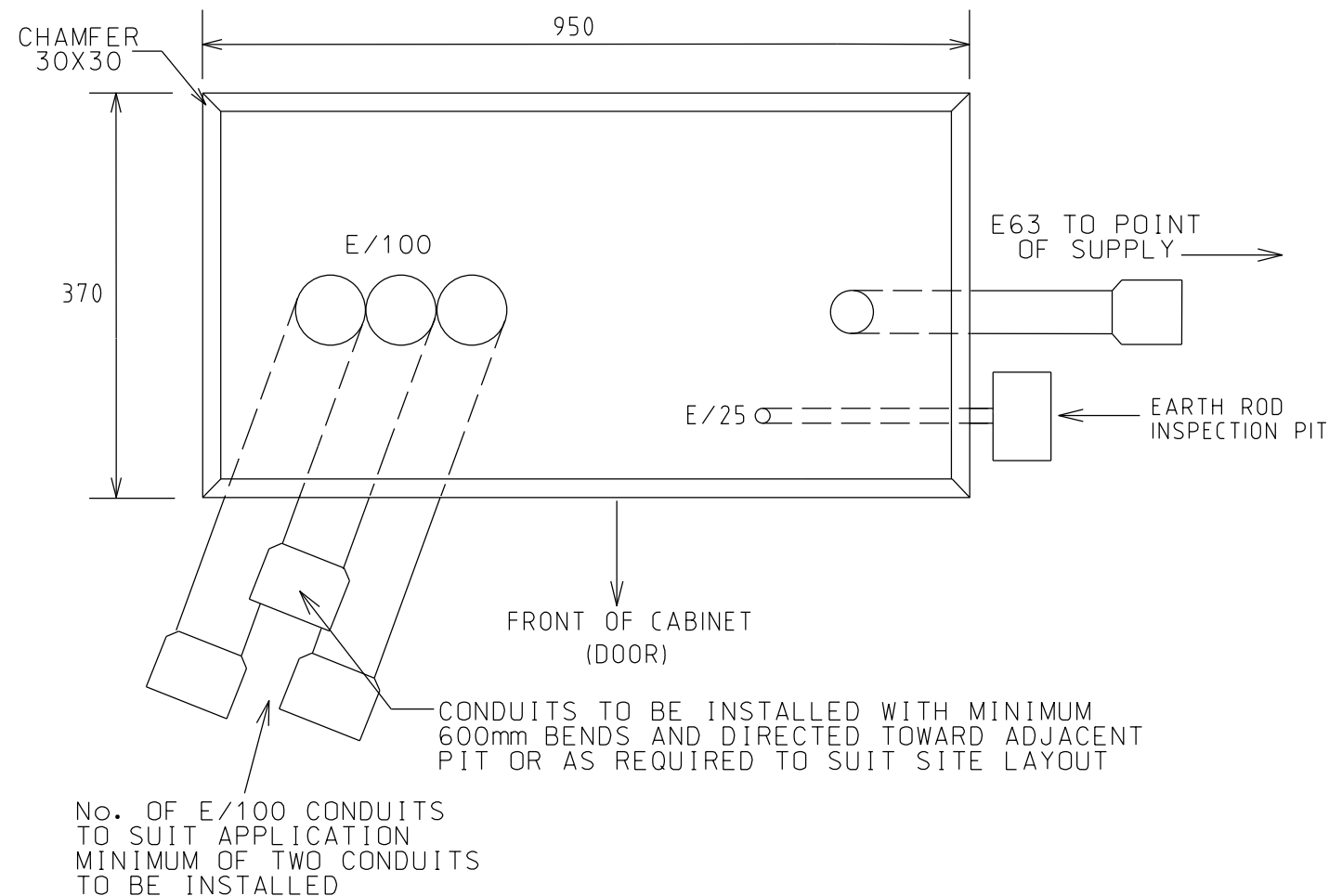
STREET LIGHTING BRACKET SINGLE & DOUBLE - TYPE 2
UP TO 5m OUTREACH FOR 10.5 kg LUMINAIRE
UP TO 4.5m OUTREACH FOR 15 kg LUMINAIRE

CHECKED	DATE	APPROVED	DATE	SPEC. REF.	SHEET No.	DRAWING No.	AMENDMENT
R.S.	9/9/96	B. HEARN	11/9/96			TC-1061	D
		MANAGER ITS					



CONDUIT SPECIFICATION (TO AS 2053)

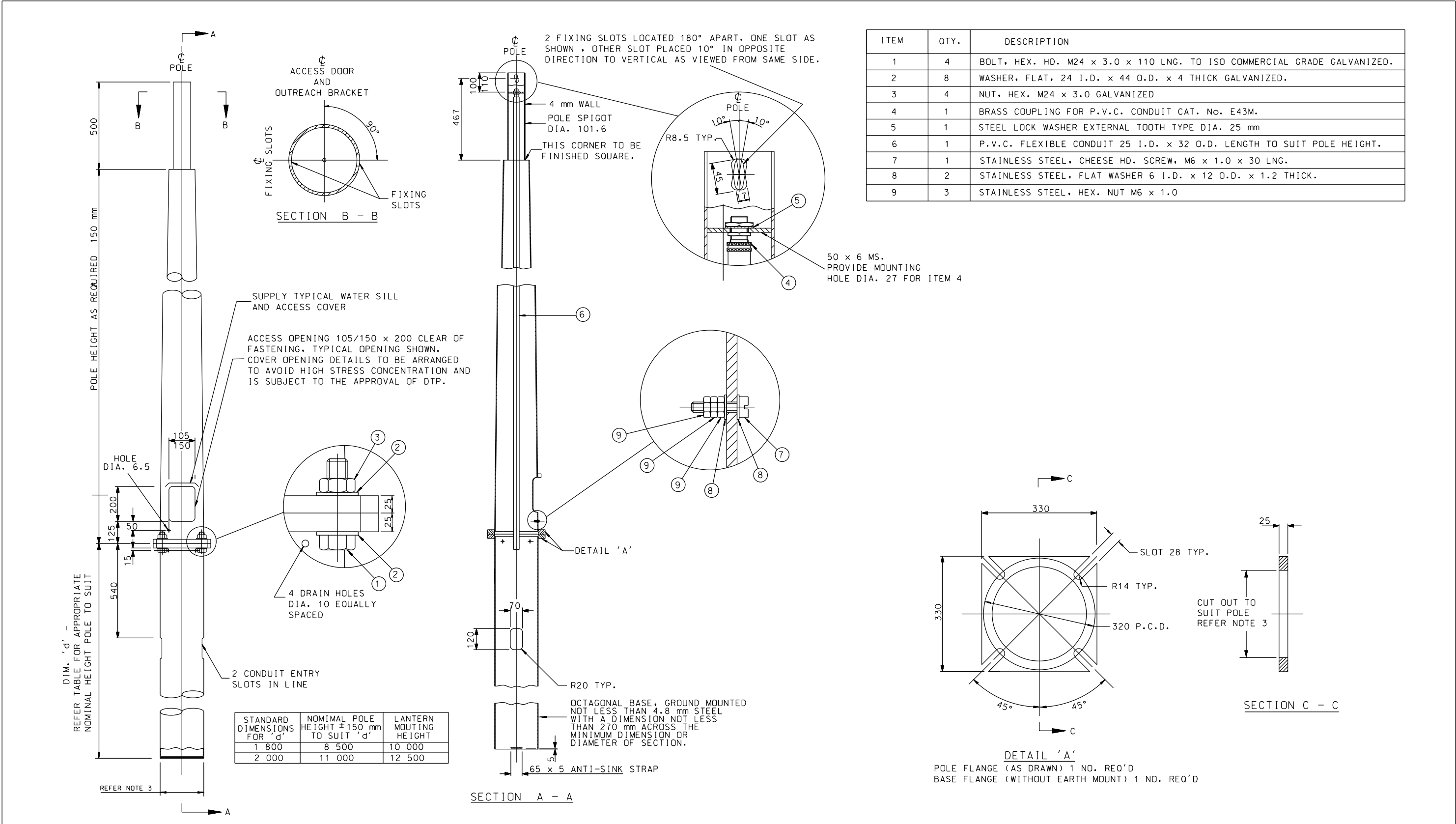
E/100 = ELECTRICAL (ORANGE) HEAVY DUTY CONDUIT 100 DIA
 E/63 = ELECTRICAL (ORANGE) HEAVY DUTY CONDUIT 63 DIA
 E/25 = ELECTRICAL (ORANGE) HEAVY DUTY CONDUIT 25 DIA



- GENERAL NOTES (CONTINUED)
- A CLEARANCE OF 1000mm MUST BE MAINTAINED IN FRONT OF THE CABINET
 - FOUNDATION TO BE MINIMUM CLEARANCE OF 500mm TO BACK OF KERB AND 200mm FROM BUILDING LINES, POLES, ETC
 - CONDUIT ARRANGEMENT TO COMPLY WITH STANDARD DRAWING TC-1207
 - 100mm ON EACH SIDE TO BE KEPT CLEAR OF CONDUITS FOR CABINET BASE RETURN (REFER HATCHED AREA IN APRON DETAILS)
- GENERAL NOTES / CROSS REFERENCES
- UNSPECIFIED DIMENSIONS ARE IN mm
 - IN UNSEALED AREAS, A COURTESY APRON SHALL BE PROVIDED CONSISTING OF 100MM THICK CONCRETE WITH SL82 MESH EXTENDING 1000MM AROUND THE FOOTING (APRON NOT REPRESENTED TO SCALE ON DRAWING)
 - CONCRETE SHALL BE IN ACCORDANCE WITH THE REQUIREMENTS OF STANDARD SECTION 610 USING A MINIMUM CONCRETE GRADE OF VR400/40

E			
D	ZS	12/23	APRON DIMENSIONS AND NOTES UPDATE
C	SP	13/2/13	DIMS NOTES AND TITLE BLOCK UPDATED
B	SB	19/09/96	EARTH ROD INSP PIT & SINGLE PHASE DIM
A	RS	12/01	NOTE 4 DELETED
ISSUE	APP'D	DATE	AMENDMENT

DESIGNED R S 26/10/96		STANDARD DRAWING				
APPROVED B HEARN 28/10/96		STREET LIGHTING DISTRIBUTION BOX-FOUNDATION DETAIL				
CAT: Street Lighting PROJ: (a)General FILE: TC-1062.dgn	SCALE OF METRES HOR VER	FILE NO	CONTRACT NO	SHEET NO	DRAWING NO TC-1062	ISSUE D



ITEM	QTY.	DESCRIPTION
1	4	BOLT, HEX. HD. M24 x 3.0 x 110 LNG. TO ISO COMMERCIAL GRADE GALVANIZED.
2	8	WASHER, FLAT, 24 I.D. x 44 O.D. x 4 THICK GALVANIZED.
3	4	NUT, HEX. M24 x 3.0 GALVANIZED
4	1	BRASS COUPLING FOR P.V.C. CONDUIT CAT. No. E43M.
5	1	STEEL LOCK WASHER EXTERNAL TOOTH TYPE DIA. 25 mm
6	1	P.V.C. FLEXIBLE CONDUIT 25 I.D. x 32 O.D. LENGTH TO SUIT POLE HEIGHT.
7	1	STAINLESS STEEL, CHEESE HD. SCREW, M6 x 1.0 x 30 LNG.
8	2	STAINLESS STEEL, FLAT WASHER 6 I.D. x 12 O.D. x 1.2 THICK.
9	3	STAINLESS STEEL, HEX. NUT M6 x 1.0

GENERAL NOTES (CONTINUED)

- 8 ALL FABRICATIONS TO BE FINALLY HOT DIP GALVANIZED ACCORDING TO AS/NZS 4680. AFTER GALVANIZING ADDITIONAL PROTECTIVE COATING TO BE APPLIED TO OCTAGONAL BASE IN ACCORDANCE WITH THE SPECIFICATION
- 9 THE PVC FLEXIBLE CONDUIT SHALL BE STRAIGHT AND FREE OF KINKS, TWISTS AND BENDS TO ENABLE FREE TRAVEL OF THE DRAW WIRE AND ELECTRICAL CABLES
- 10 THE DRAW WIRE SHALL BE FASTENED TO FIXING SLOTS FOR TRANSPORT
- 11 POLE TOP SECTION SHALL BE TEK SCREWED TO LOWER SECTION
- 12 NUTS AND BOLTS TO BE RE-RUN AFTER GALVANIZING
- 13 MAY BE PLATE SET MOUNTED ON RAG BOLT ASSEMBLY REFER TO DRAWING TC-1601

E			
D			
C			
B	ZS	12/23	UPDATED NOTES
A	RS	6/01	AS/NZS STANDARD UPDATED
ISSUE	APP'D	DATE	AMENDMENT

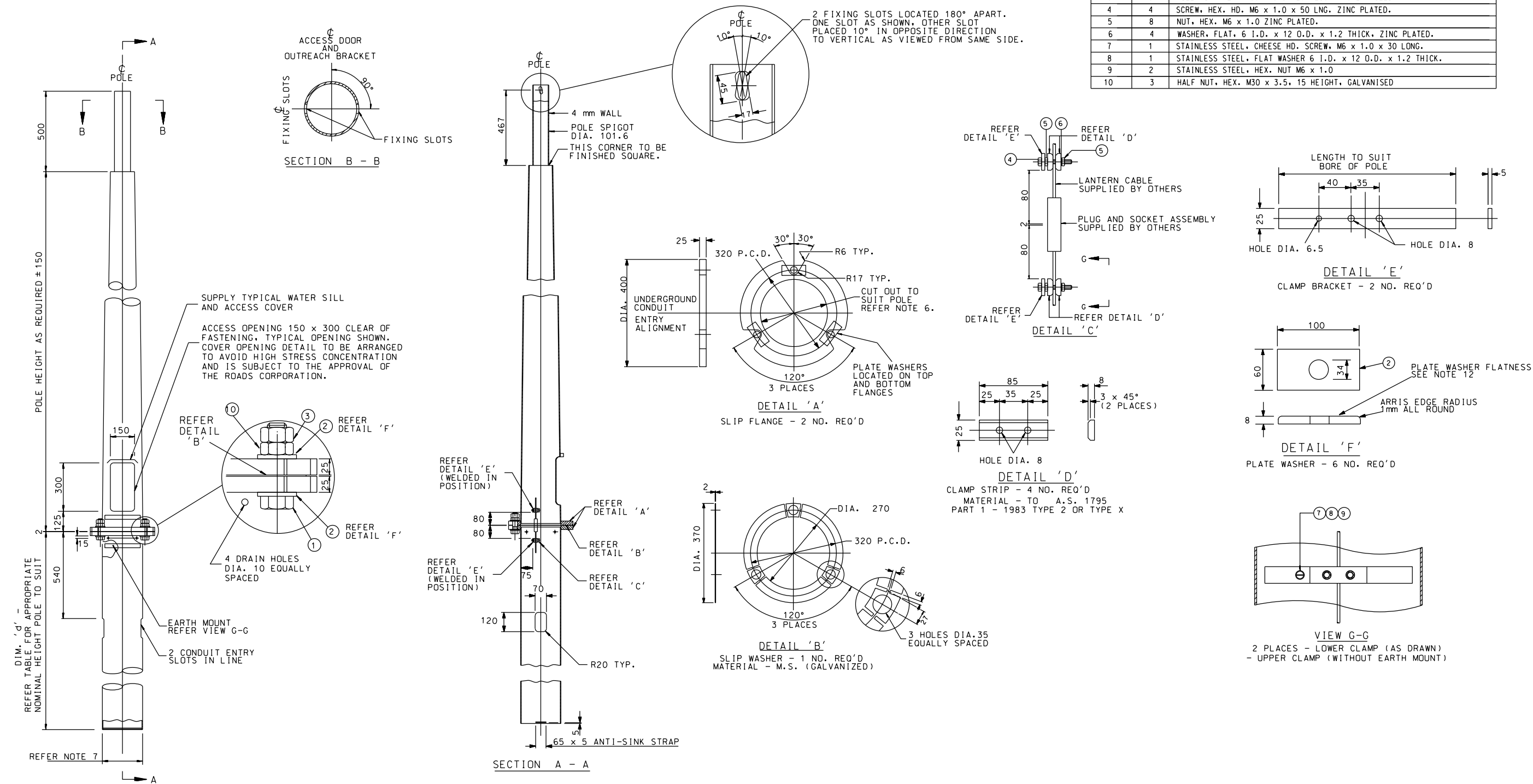
- GENERAL NOTES
- 1 UNSPECIFIED DIMENSIONS ARE IN mm
- 2 ALL SLOTS, HOLES AND BOLTS ARE TO BE CLEAR OF EXCESS GALVANIZING, METAL BURRS ETC
- 3 ALL IMPACT ABSORBING POLES ARE TO BE FULLY ASSEMBLED PRIOR TO DELIVERY
- 4 MAXIMUM POLE DIAMETER/DIMENSION CONTROLLED BY NEED TO ENSURE CLEARANCE BETWEEN BOLT, WASHERS AND WELD
- 5 CENTRE LINE OF POLE TO BE PERPENDICULAR TO BASE PLANE PLUS OR MINUS 1°
- 6 IN EACH CASE THE CONDUIT MOUNT SHALL BE CAPABLE OF SUPPORTING A LOAD OF 500N
- 7 MATERIAL MS EXCEPT WHERE OTHERWISE SPECIFIED

CHECKED RS 26/10/96	
APPROVED B HEARN 28/10/96	
CAT. Street Lighting PROJ. (a) General FILE TC-1064 dgn	

SCALE OF METRES	
HOR	
VER	

STANDARD DRAWING STREET LIGHTING IMPACT ABSORBING POLE ASSEMBLY GROUND SET MOUNTED				
FILE NO	CONTRACT NO	SHEET NO	DRAWING NO TC-1064	ISSUE B

ITEM	QTY.	DESCRIPTION
1	3	BOLT, HEX. HD. M30 x 3.5 x 120 LONG. COMMERCIAL GRADE 4.6 GALVANIZED
2	6	WASHER, 8mm THICK, GRADE 250 PLATE, GALVANIZED WITH 34 Dia HOLE
3	3	FULL NUT, HEX. M30 x 3.5, 26 HEIGHT, GALVANIZED
4	4	SCREW, HEX. HD. M6 x 1.0 x 50 LNG. ZINC PLATED.
5	8	NUT, HEX. M6 x 1.0 ZINC PLATED.
6	4	WASHER, FLAT, 6 I.D. x 12 O.D. x 1.2 THICK, ZINC PLATED.
7	1	STAINLESS STEEL, CHEESE HD. SCREW, M6 x 1.0 x 30 LONG.
8	1	STAINLESS STEEL, FLAT WASHER 6 I.D. x 12 O.D. x 1.2 THICK.
9	2	STAINLESS STEEL, HEX. NUT M6 x 1.0
10	3	HALF NUT, HEX. M30 x 3.5, 15 HEIGHT, GALVANISED

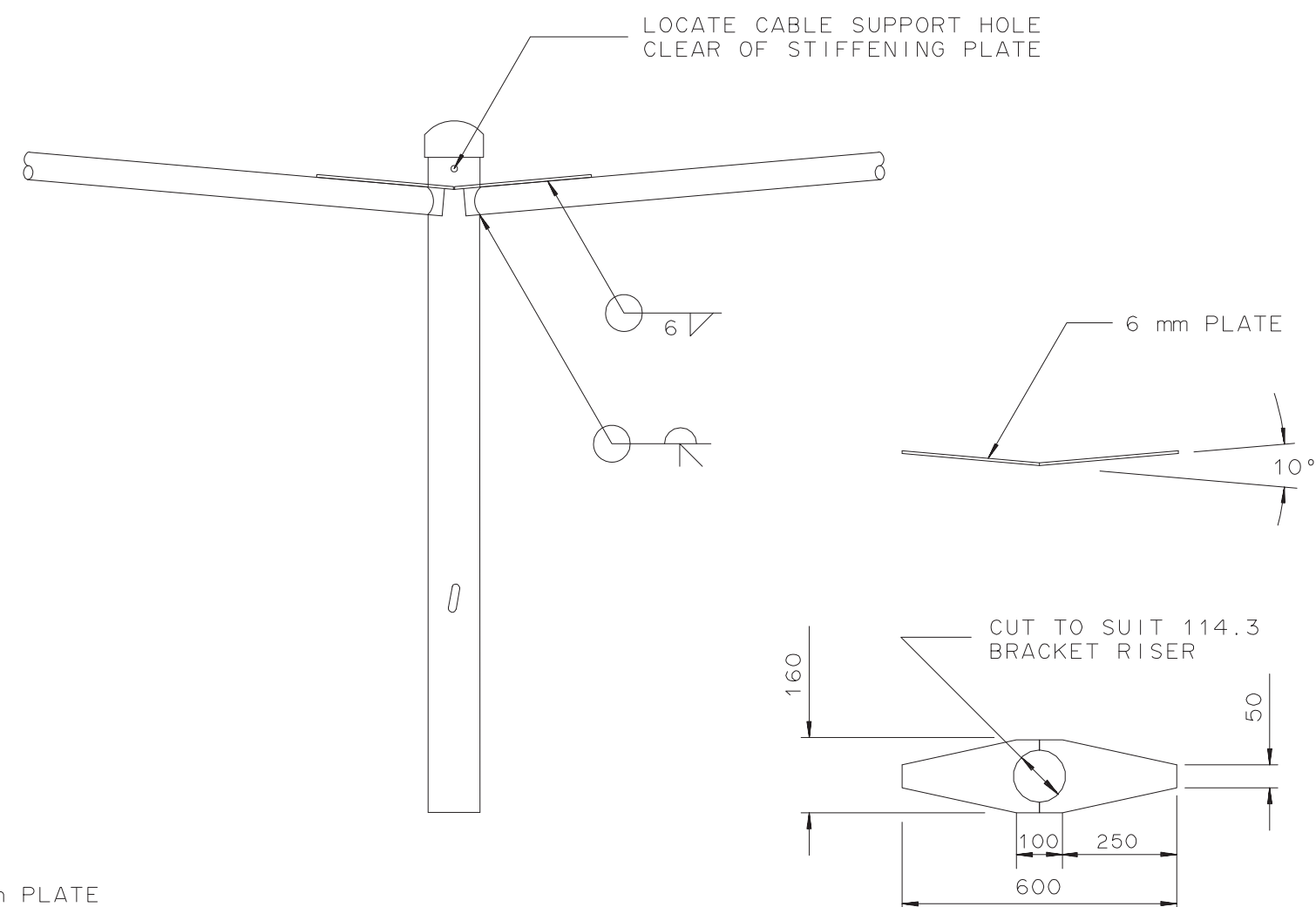
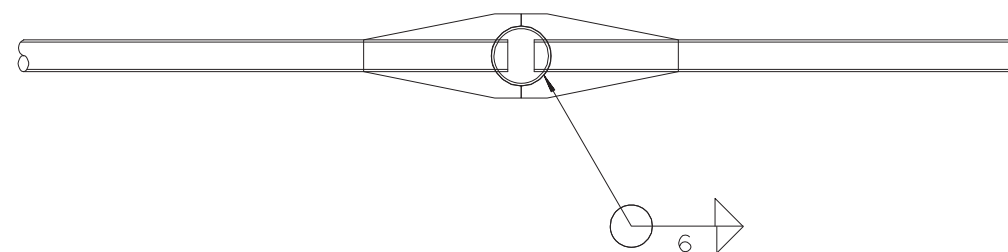



AMENDMENT C NOTES	
1.	BOLT LENGTH INCREASED TO 120mm (ITEM 1)
2.	PLATE WASHER THICKNESS INCREASED TO 8mm (ITEM 2)
3.	FULL NUT USED AS LOCK NUT (ITEM 3)
4.	HALF NUT ADDED (ITEM 10)
5.	RE-TORQUEING OF SLIP BASE BOLTS INCREASED TO 90+/-10Nm (NOTE 2)
6.	PLATE WASHER FLATNESS TOLERANCE REQUIREMENT (NOTE 12)
7.	PLATE WASHER ARRIS EDGE RADIUS REQUIREMENT (DETAIL F)

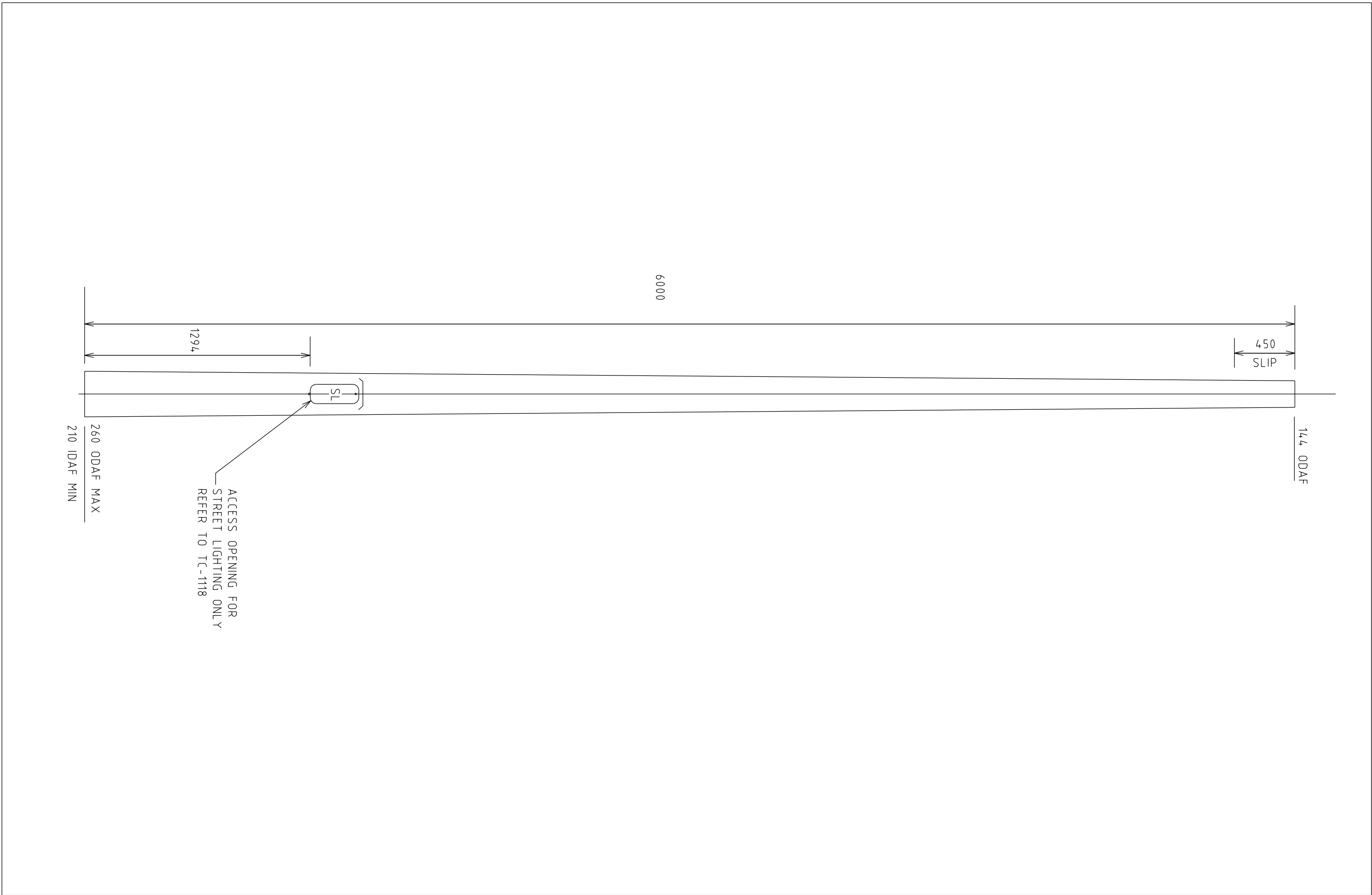
STANDARD DIMENSIONS FOR 'd'	NOMINAL POLE HEIGHT ±150, mm TO SUIT 'd'	LANTERN MOUNTING HEIGHT
1 800	8 500	10 000
2 000	11 000	12 500
2 500	13 500	15 000


- GENERAL NOTES (CONTINUED)
- MAXIMUM POLE DIAMETER/DIMENSION CONTROLLED BY NEED TO ENSURE CLEARANCE BETWEEN BOLT, WASHERS AND WELD
 - CENTRE LINE OF POLE TO BE PERPENDICULAR TO BASE SLIP PLANE PLUS OR MINUS 1°
 - POLE TOP SECTION SHALL BE TEK SCREWED TO LOWER SECTION
 - ALL SLOTS, HOLES AND BOLTS ARE TO BE CLEAR OF EXCESS GALVANIZING, METAL BURRS ETC
 - MATERIAL M.S EXCEPT WHERE OTHERWISE SPECIFIED
 - ALL FABRICATIONS TO BE FINALLY HOT DIP GALVANIZED ACCORDING TO AS/NZS 4680 AFTER GALVANIZING ADDITIONAL PROTECTIVE COATING TO BE APPLIED TO OCTAGONAL BASE IN ACCORDANCE WITH THE SPECIFICATION
 - NUTS AND BOLTS TO BE RE-RUN AFTER GALVANIZING
 - PLATE WASHER OUT-OF-FLATNESS TOLERANCE NOT TO EXCEED 0.5MM OVER 100mm
 - SLIP WASHER TO BE INSTALLED CONCENTRIC WITH SLIP FLANGE

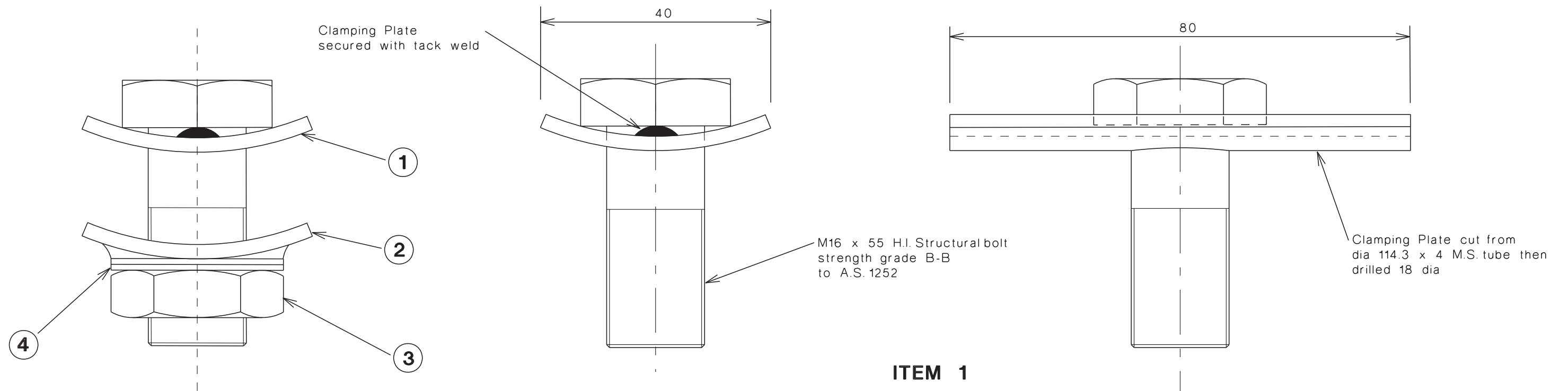
E	ZS	12/23	UPDATED NOTES	<p>GENERAL NOTES</p> <ol style="list-style-type: none">UNSPECIFIED DIMENSIONS ARE IN mmALL SLIP BASE POLES ARE TO BE FULLY ASSEMBLED PRIOR TO DELIVERYM30 SLIP BASE BOLTS ARE TO BE FULLY TIGHTENED TO A TORQUE OF 150Nm ON ASSEMBLY AND RE-TORQUED TO TCN 006 UPON INSTALLATIONSLIP BASE BOLTS WASHERS SHOULD NOT FOUL THE STEM TO BASE PLATE WELDSSLIP PLANE SURFACES OF FLANGES ARE TO BE FREE OF ANY PROTRUSIONS OR IRREGULARITIES	CHECKED RS 5/98		STANDARD DRAWING STREET LIGHTING				
D	SP	22/5/17	REPLACE NOTE 2		APPROVED B HEARN 8/5/98		SLIP BASE POLE GROUND SET MOUNTED				
C	SP	1/4/08	SEE AMENDMENT C NOTES		CAT Street Lighting PROJ (a)General FILE TC-1065 dgn		SCALE OF METRES				
B	RS	06/01	AS/NZS STANDARD UPDATED		HOR		FILE NO				
A	RS	08/98	DRAIN HOLES DIMENSIONED		VER		CONTRACT NO				
ISSUE	APP'D	DATE	AMENDMENT				SHEET NO				
							DRAWING NO TC-1065				
							ISSUE E				



E				GENERAL NOTES / CROSS REFERENCES UNSPECIFIED DIMENSIONS ARE IN mm. <u>ASSOCIATED DRAWINGS:</u> TC-1060, TC-1061	<div> TRAFFIC AND ROAD USE MANAGEMENT DEPARTMENT</div>	STANDARD DRAWING STREET LIGHTING BRACKET SINGLE AND DOUBLE TYPE-1 AND TYPE-2 STIFFENING PLATE						
D												
C												
B												
A	RS	6/97	WELDS UPDATED									
AMEND.	Appd.	DATE	AMENDMENTS		TRAFFIC SYSTEM OPERATION	CHECKED RS 4/6/97	DATE 6/97	APPROVED BH T.S.O. MANAGER	SPEC. REF.	SHEET No.	DRAWING No. TC - 1067	AMENDMEN A

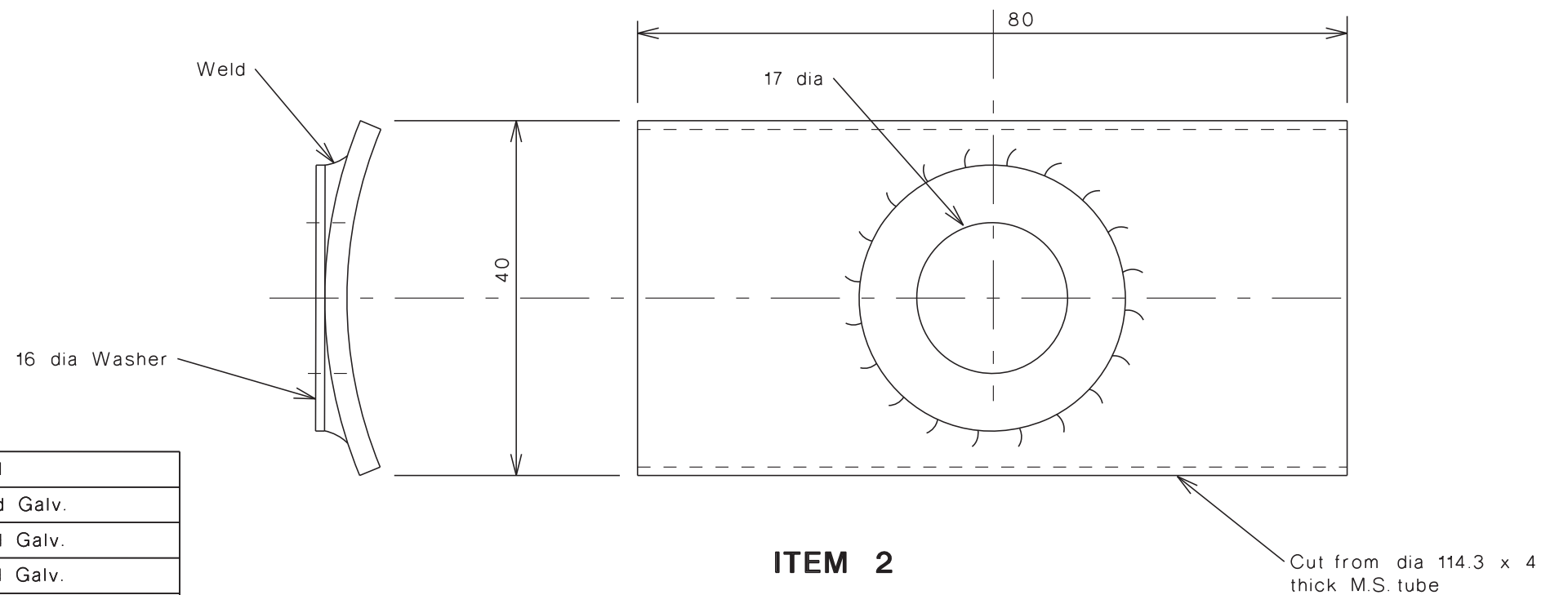



E				<div>GENERAL NOTES</div> <div>1 UNSPECIFIED DIMENSIONS ARE IN mm</div> <div>2 IDAF - INTERNAL DIAMETER ACROSS FLATS</div> <div>3 ODAF - OUTSIDE DIAMETER ACROSS FLATS</div> <div>4 POLE CROSS SECTION SHAPE SHALL BE OCTAGONAL</div> <div>5 FOR USE WITH STREET LIGHTING EXTENSION UP TO A MAXIMUM LUMINAIRE MOUNTING HEIGHT OF 15 metres</div> <div>6 BASE PLATE TO TC-1107</div>	CHECKED			STANDARD DRAWING STREET LIGHTING RIGID STREET LIGHTING POLE BASE SECTION					
D					RS 17/02/2000								
C					APPROVED								
B					BH 23/02/2000								
A					CAT Street Lighting PROJ: (a)General FILE TC-1068.dgn								
ISSUE	APP'D	DATE	AMENDMENT		SCALE OF METRES		HOR	FILE NO		CONTRACT NO	SHEET NO	DRAWING NO TC-1068	ISSUE
					VER								

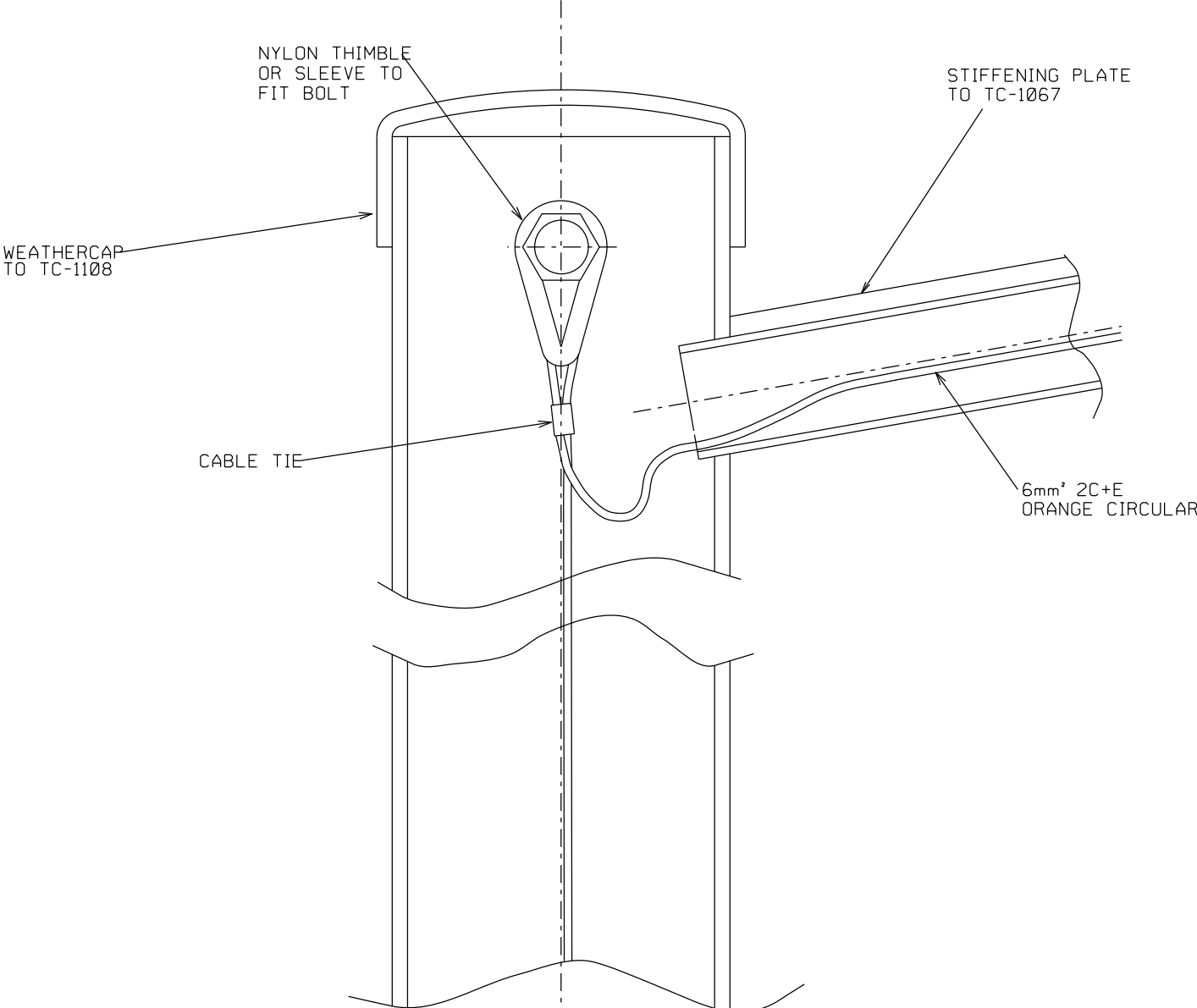


Heat Treatment for Item 1 Only:
Temper for 45 minutes minimum at 430° to 450°
before Pickling or Galvanising

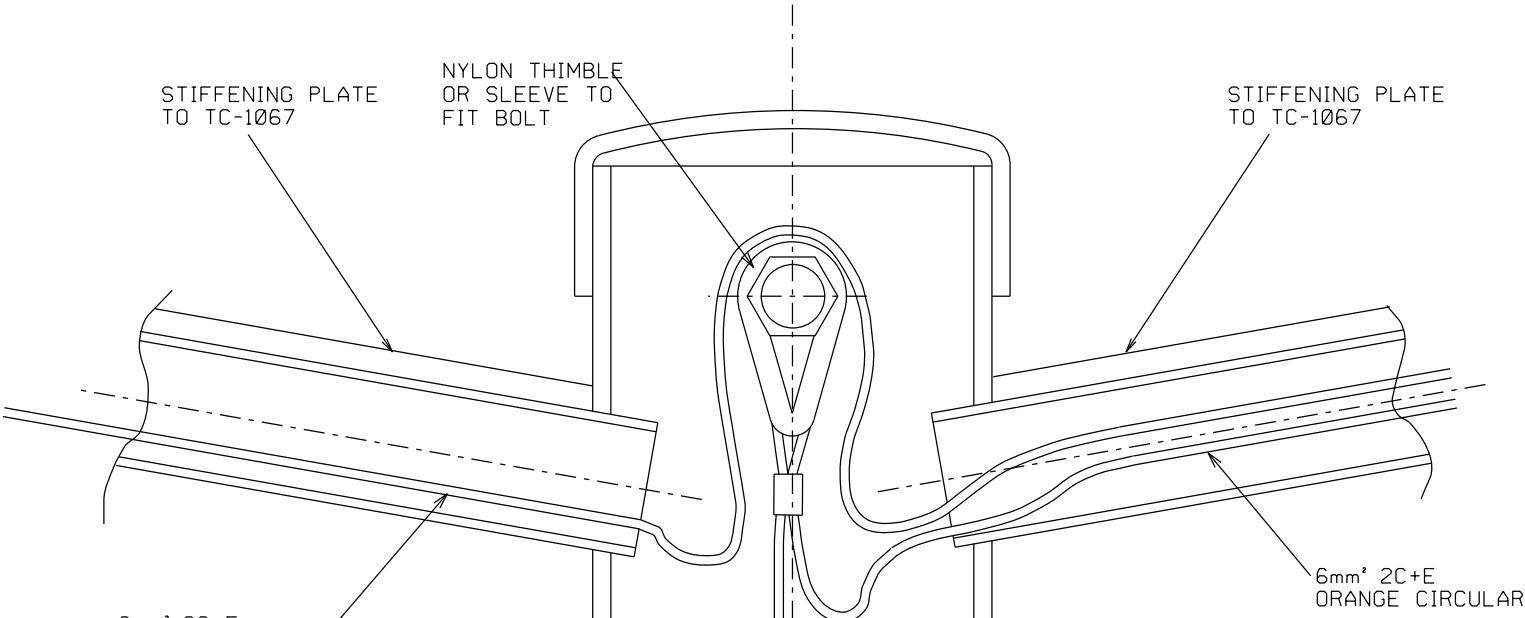
4	16 dia Flat Washer	1	M.S	Galvanised
3	Nut, M16	1	M.S	Hot Dipped Galv.
2	External Clamping Plate	1	Steel	Hot Dipped Galv.
1	Internal Clamping Plate	1	Steel	Hot Dipped Galv.
ITEM	DESCRIPTION	No. OFF	MATERIAL	REMARKS



E				GENERAL NOTES / CROSS REFERENCES UNSPECIFIED DIMENSIONS ARE IN mm. <u>ASSOCIATED DRAWINGS:</u> TC-1060, TC-1061		STANDARD DRAWING STREET LIGHTING CLAMPING PLATE - BRACKET TO POLE SPIGOT						
D						INTELLIGENT TRANSPORT SYSTEMS GROUP	CHECKED DATE SP 18/9/06	APPROVED DATE SB 19/9/06 MANAGER ITS	SPEC. REF.	SHEET No.	DRAWING No.	AMENDMENT
C												
B												
A												
AMEND.	Appd.	DATE	AMENDMENTS							TC-1069		



SINGLE OUTREACH DETAIL



DOUBLE OUTREACH DETAIL

E			
D			
C			
B			
A	Z S	12/23	CHANGED CABLE TO ORANGE CIRCULAR
ISSUE	APP'D	DATE	AMENDMENT

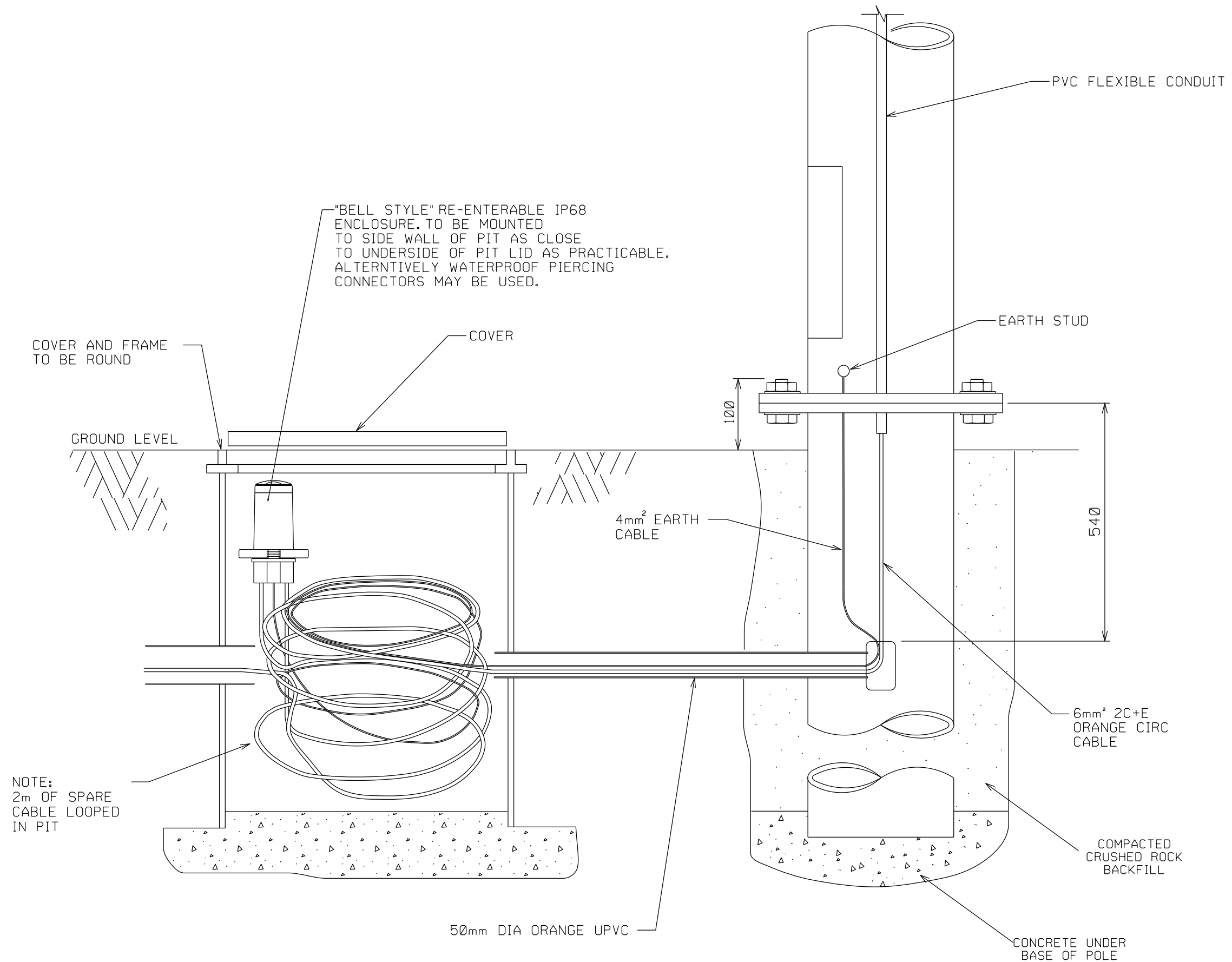
GENERAL NOTES / CROSS REFERENCES
UNSPECIFIED DIMENSIONS ARE IN mm

DESIGNED S P 18/09/06
APPROVED S B 19/09/06
CAT: Street Lighting PROJ: (a)General FILE: TC-1070.dgn



SCALE OF METRES	
HOR	VER

STANDARD DRAWING STREET LIGHTING CABLE SUPPORT FOR OUTREACH				
FILE NO	CONTRACT NO	SHEET NO	DRAWING NO TC-1070	ISSUE A



E			
D			
C	ZS	12/23	CHANGE PIT TO POLE AND POLE INTERNAL CABLE TO O/C
B	SP	1/9/17	CHANGE CABLE AND NEW NOTE
A	SP	1/6/14	INCLUSION OF BELL STYLE ENCLOSURE
ISSUE	APP'D	DATE	AMENDMENT

GENERAL NOTES

- UNSPECIFIED DIMENSIONS ARE IN mm
- NO ADDITIONAL CABLE JOINTS ARE ALLOWED BETWEEN THE JOINT IN THE ELECTRICAL PIT AND THE LUMINAIRE
- ASSOCIATED DRAWINGS TC-1210, TC-1220 AND TC-1230

CHECKED
SP 18/09/06

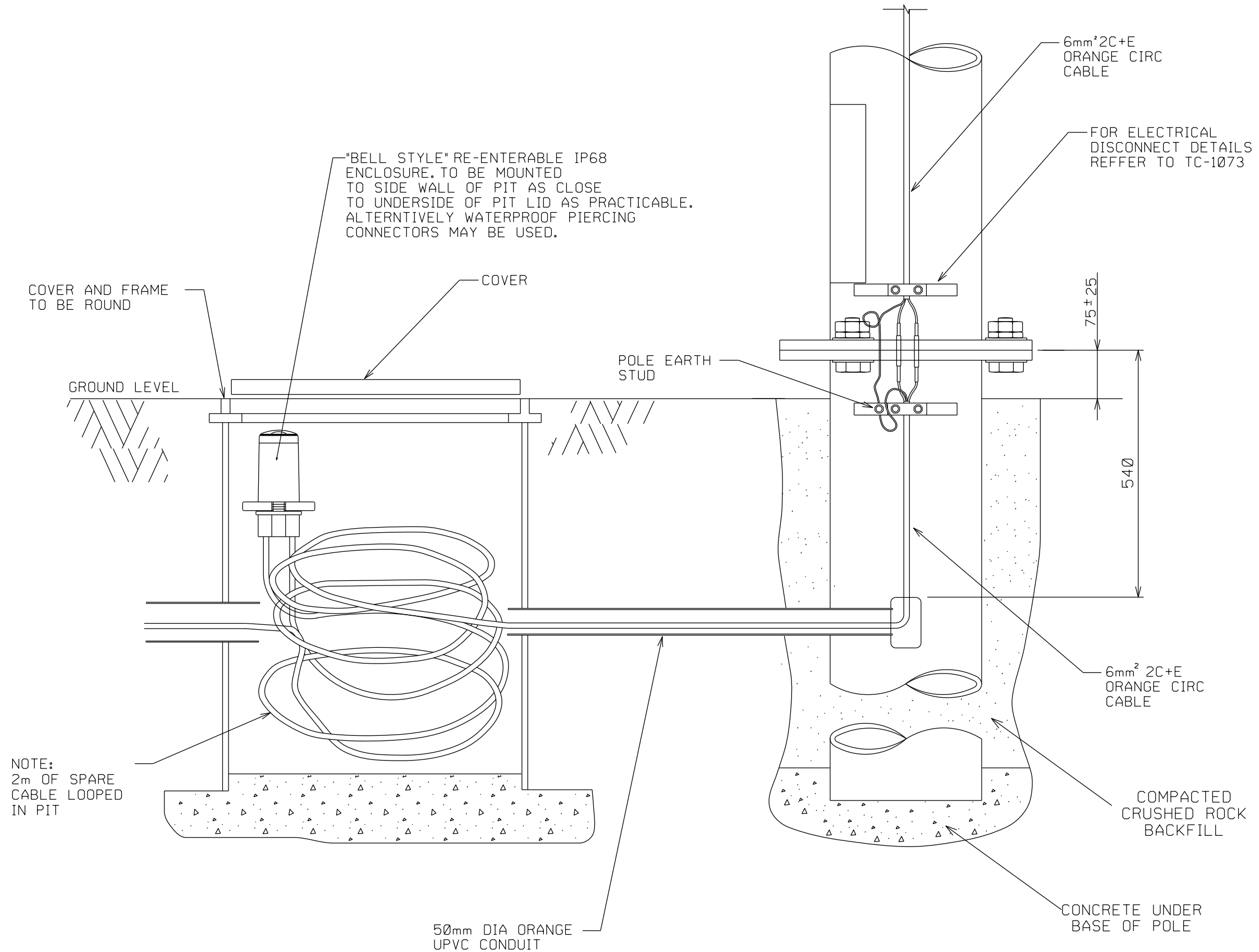
APPROVED
SB 19/09/06

CAT: Street Lighting
PROJ: (a)General
FILE: TC-1071.dgn



SCALE OF METRES
HOR
VER

STANDARD DRAWING STREET LIGHTING				
IMPACT ABSORBING POLE ELECTRICAL INSTALLATION DETAILS				
FILE NO	CONTRACT NO	SHEET NO	DRAWING NO TC-1071	ISSUE C



E			
D			
C	ZS	12/23	CHANGE PIT TO POLE AND POLE INTERNAL CABLE TO O/C
B	SP	1/9/17	CHANGE CABLE AND NEW NOTE
A	SP	1/6/14	INCLUSION OF BELL STYLE ENCLOSURE
ISSUE	APP'D	DATE	AMENDMENT

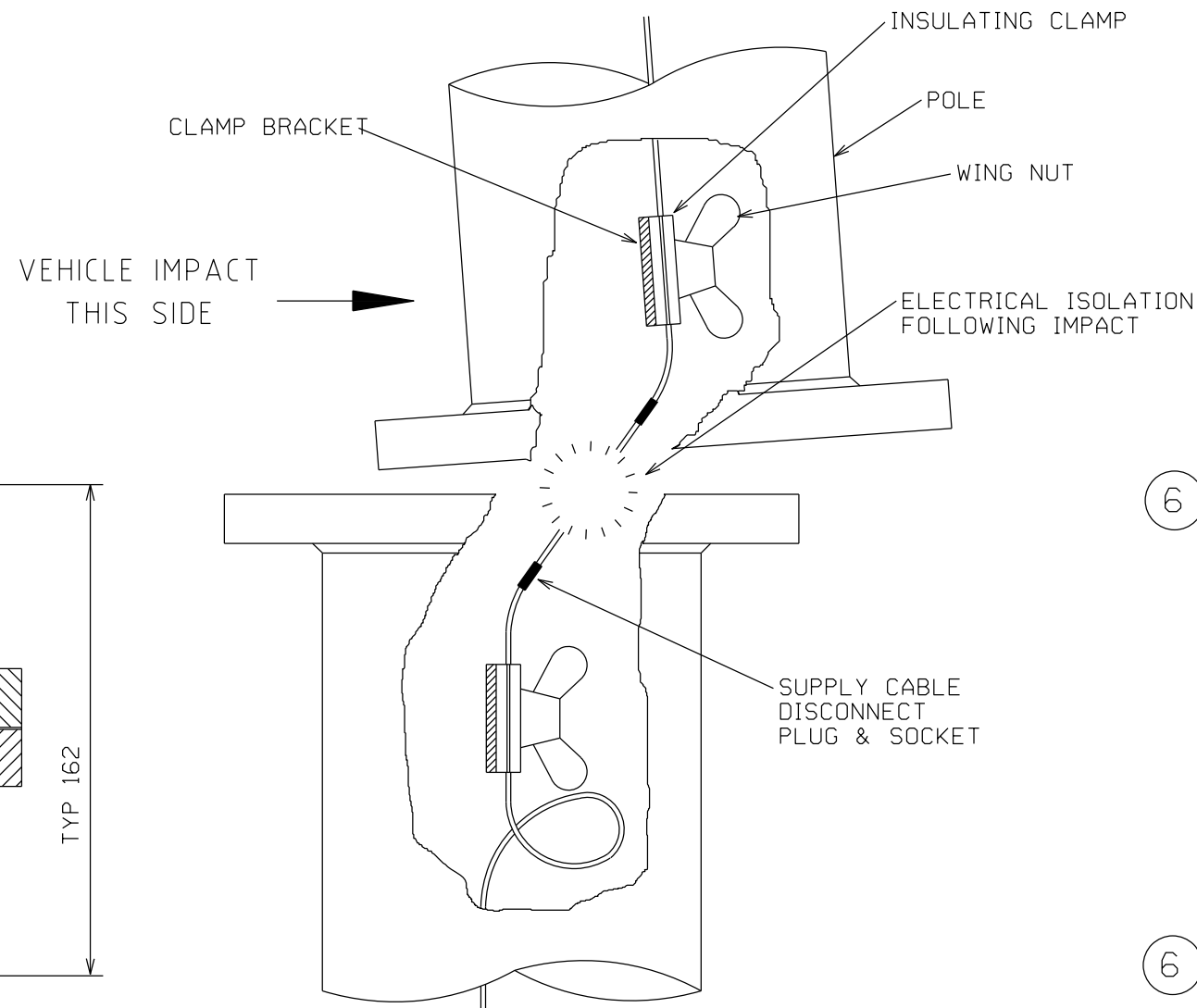
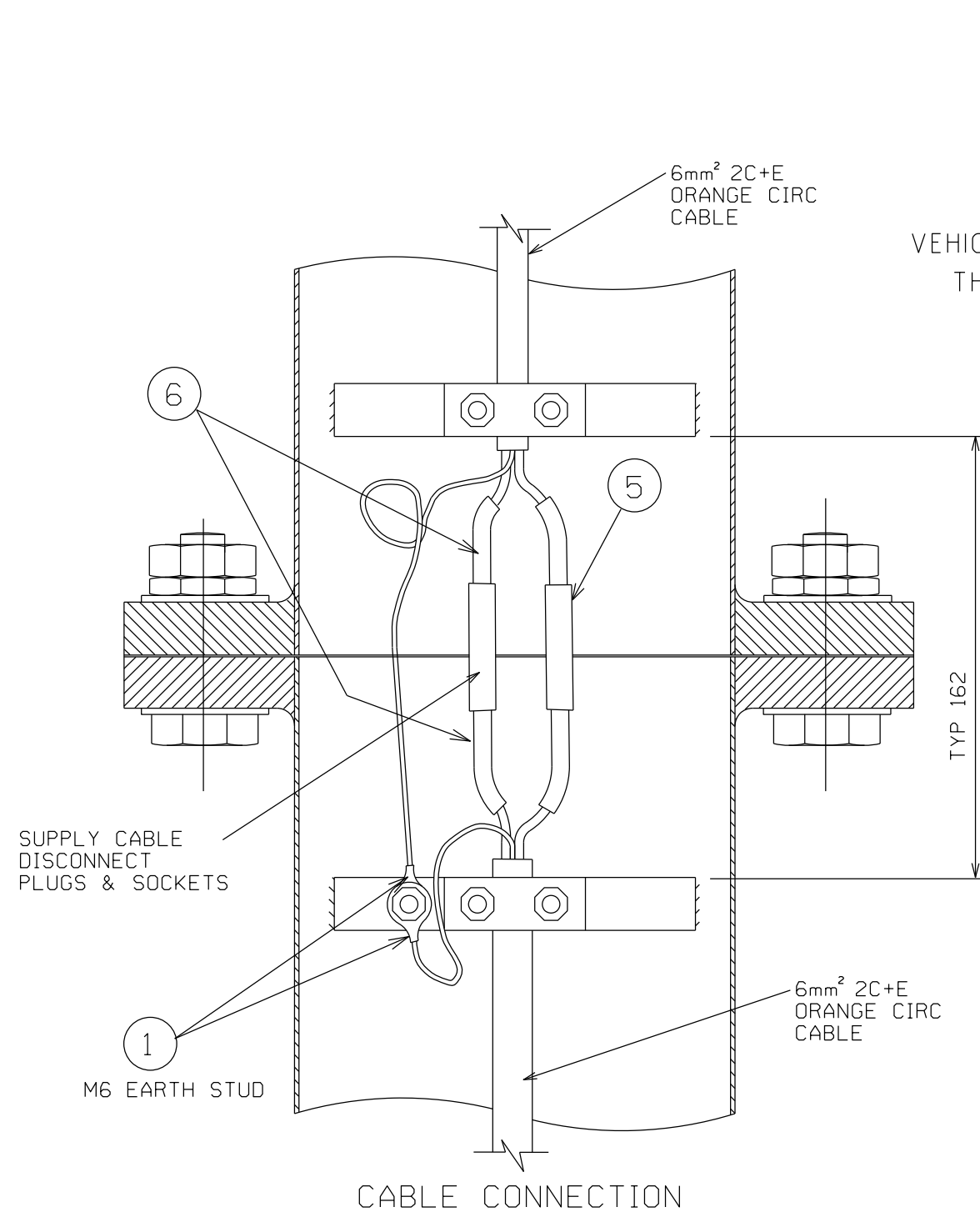
GENERAL NOTES
1 UNSPECIFIED DIMENSIONS ARE IN mm
2 NO ADDITIONAL CABLE JOINTS ARE ALLOWED BETWEEN THE JOINT IN THE ELECTRICAL CABLE PIT AND THE DISCONNECT JOINT NOR BETWEEN THE DISCONNECT JOINT AND THE LUMINAIRE
3 ASSOCIATED DRAWINGS TC-1210, TC-1220, TC-1230 AND TC-1073

CHECKED SP 18/09/06	
APPROVED SB 19/09/06	
CAT: Street Lighting PROJ: (a)General FILE: TC-1072 dgn	



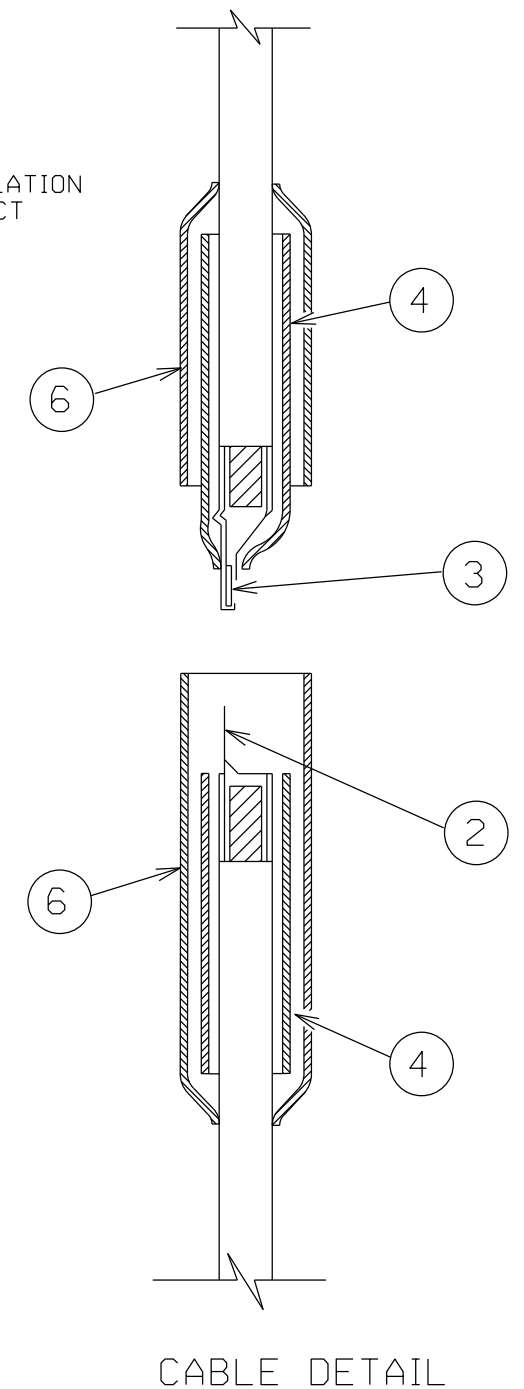
HOR	SCALE OF METRES
VER	

STANDARD DRAWING STREET LIGHTING				
SLIP BASE POLE ELECTRICAL INSTALLATION DETAILS				
FILE NO	CONTRACT NO	SHEET NO	DRAWING NO TC-1072	ISSUE C



ELECTRICAL DISCONNECTION

ITEM	DESCRIPTION
1	Lug, Cable Crimp 6
2	Utilux connector Cat. No. H2846 or similar approved
3	Utilux connector Cat. No. H3562 or similar approved
4	Sleeve, Heatshrink with Inner Mastic 19/5
5	Tubing Polyolefin 13/6, Red
6	Tubing Polyolefin 13/6, Black



E			
D			
C			
B	ZS	12/23	GENERAL DETAILS UPDATE, CABLE CHANGE TO ORANGE CIRC
A	SP	1/9/17	CABLE CHANGE
ISSUE	APP'D	DATE	AMENDMENT

GENERAL NOTES
UNSPECIFIED DIMENSIONS ARE IN mm

CHECKED
SP 18/09/06

APPROVED
SB 19/09/06

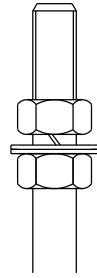
CAT: Street Lighting
PROJ: (a)General
FILE: TC-1073.dgn



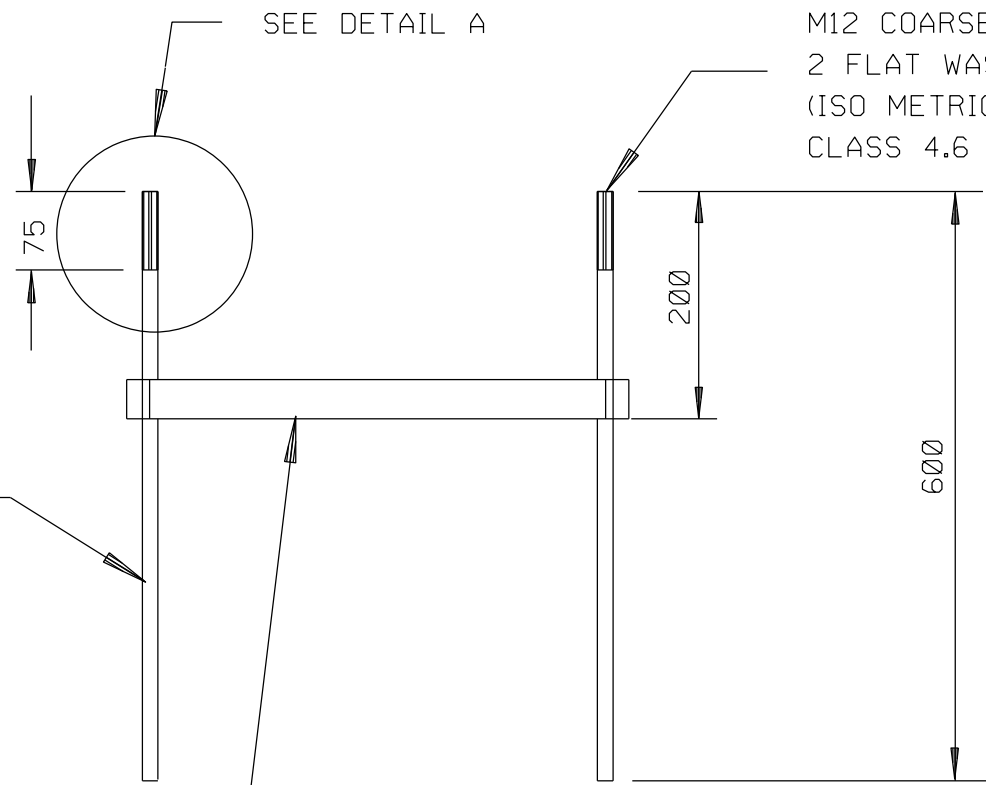
SCALE OF METRES
HOR
VER

STANDARD DRAWING
SLIP BASE POLE
ELECTRICAL DISCONNECT DETAILS

FILE NO	CONTRACT NO	SHEET NO	DRAWING NO TC-1073	ISSUE B
---------	-------------	----------	-----------------------	------------

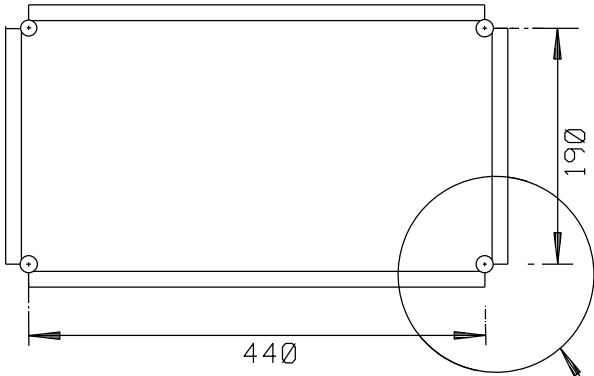


DETAIL A

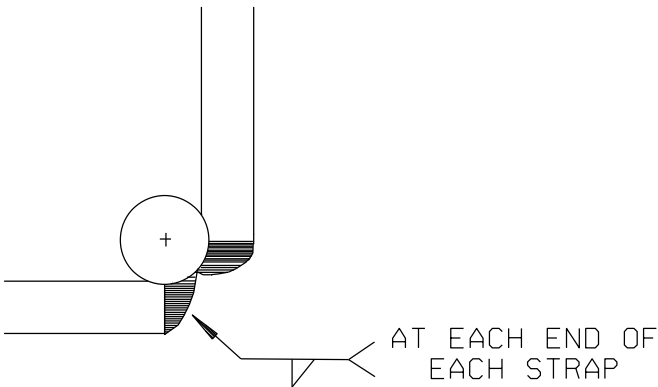


4 No. 12mm RAG BOLTS, 600 LONG


4 No. 6X32 BLACK STEEL STRAP WELDED TO RAG BOLTS.



SEE DETAIL B



DETAIL B

E				<div>GENERAL NOTES</div> <div>1 UNSPECIFIED DIMENSIONS ARE IN mm</div> <div>2 RAG BOLTS TO BE USED FOR TYPE-2 DISTRIBUTION CABINET (TC-1074)</div>	CHECKED J RANDALL 21/12/95		<div></div>	<div>STANDARD DRAWING</div> <div>RAG BOLT ASSEMBLY FOR TYPE-2 DISTRIBUTION CABINETS</div>				
D					APPROVED B HEARN 21/12/95							
C					CAT Street Lighting PROJ (a)General FILE TC-1075.dgn							
B					SCALE OF METRES HOR  VER 							
A	SP	12/23	UPDATE BOLT REFERENCE									
ISSUE	APP'D	DATE	AMENDMENT				FILE NO	CONTRACT NO	SHEET NO	DRAWING NO TC-1075	ISSUE A	

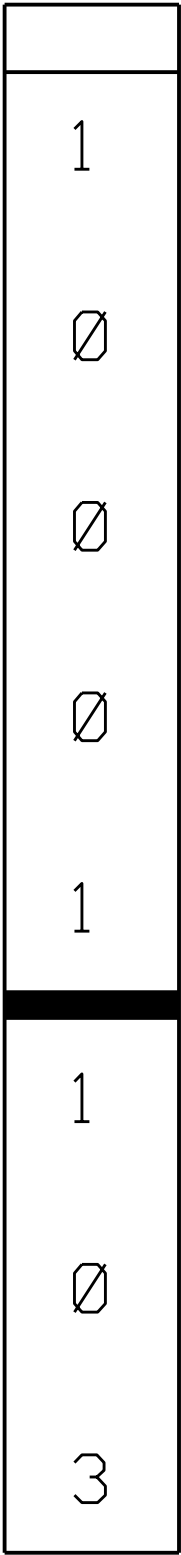
8 DIGIT POLE ASSET NUMBER

EXAMPLE

EG. LABEL: 10001103


CABINET SITE IDENTIFIER
NUMBER

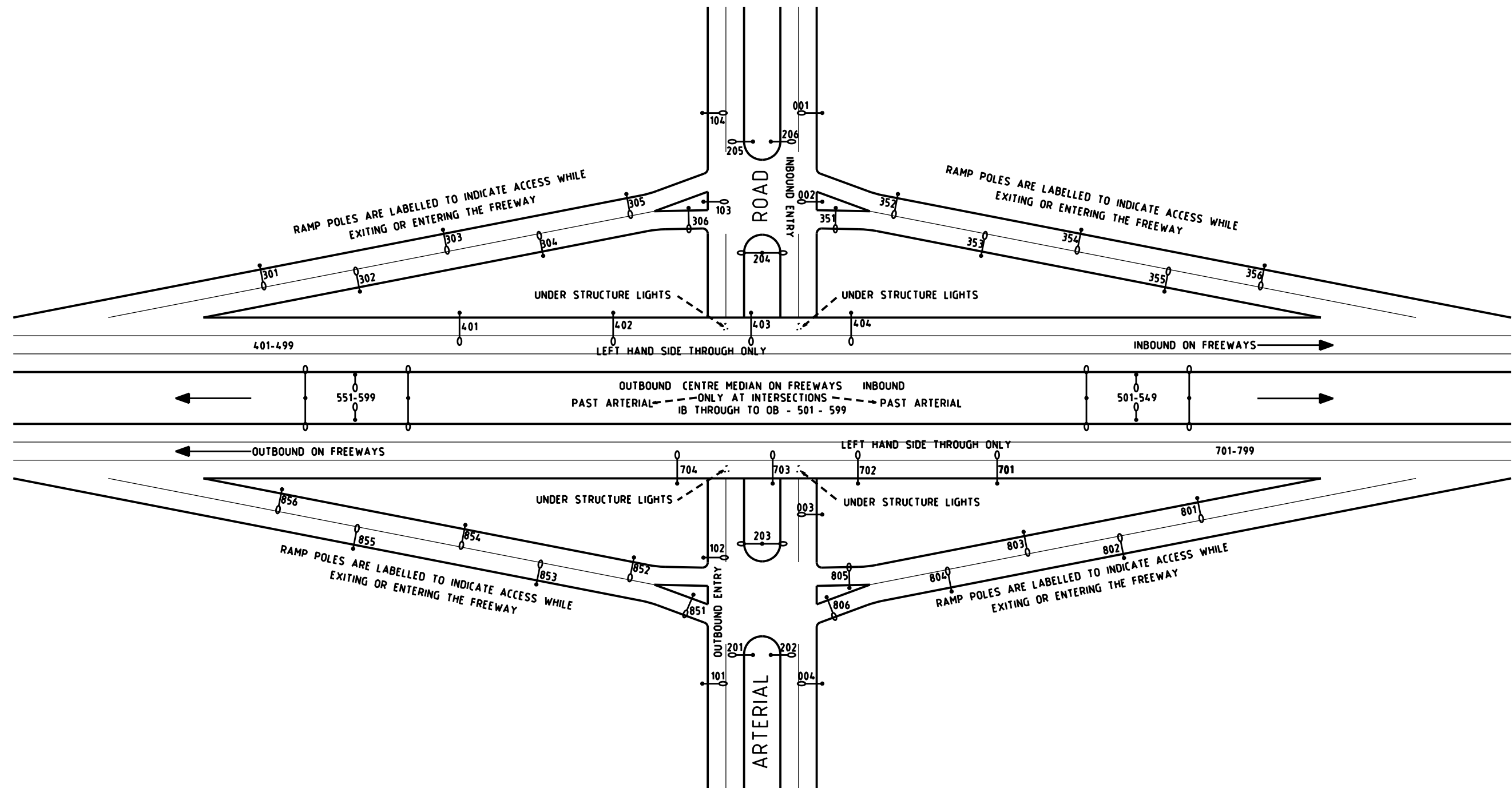
POLE LOCATION IDENTIFIER
NUMBER






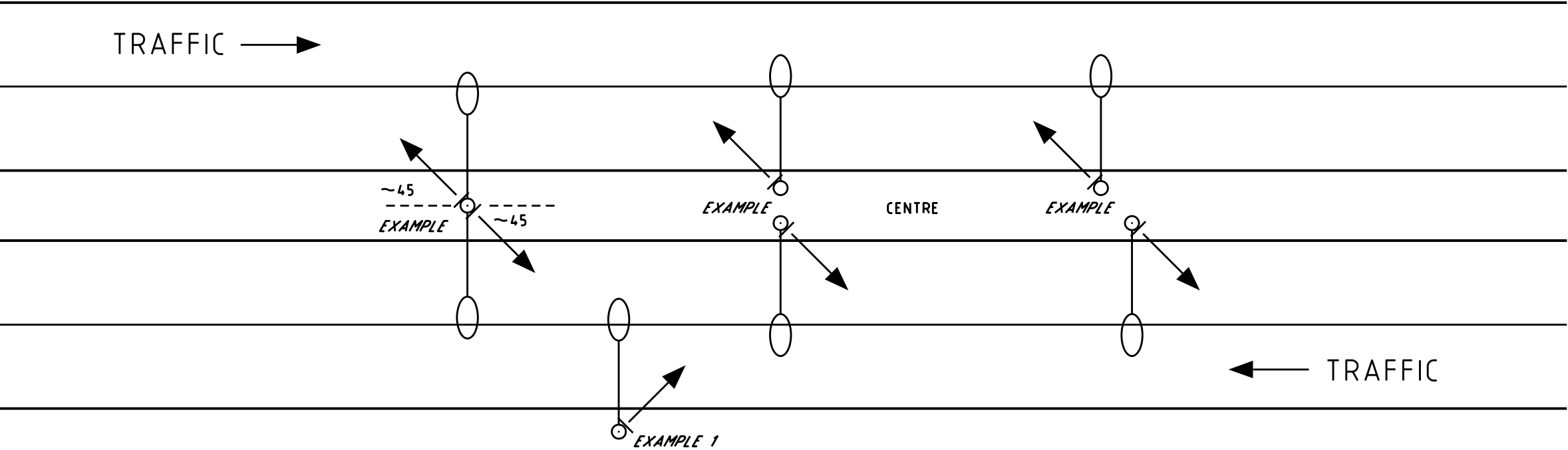
POLE LOCATION IDENTIFIER SYSTEM INSTRUCTION GUIDE

- 0 - INBOUND LHS LIGHTING AN ARTERIAL ROAD (001-099)
- 1 - OUTBOUND LHS LIGHTING AN ARTERIAL ROAD (101-199)
- 2 - CENTRE/MEDIAN LHS/RHS/CM LIGHTING AN ARTERIAL ROAD (201-299)
- 3 - FREEWAY RAMPS - 1B EXIT LHS/RHS (301-349) & 1B ENTRY (351-399)
- 4 - 1B FREEWAY THROUGH MOVEMENT - LHS ONLY (401-499) EXCL RAMP EXTENSION
- 5 - CENTRE/MEDIAN FREEWAY LHS/RHS/CM (501-549 & 551-599)
- 6 - ON ANY UNDER STRUCTURE (601-629)
- 6 - ON ANY BRIDGE STRUCTURE (631-699)
- 7 - OB FREEWAY THROUGH MOVEMENT - LHS ONLY (701-799) EXCL RAMP EXTENSION
- 8 - FREEWAY RAMPS - OB EXIT LHS/RHS (801-849) & OB ENTRY (851-899)
- 9 - FEATURE/ONLY PEDESTRIAN UNDER/BRIDGE OVER PASS LIGHTING
- 9 - TUNNEL/(ROW ID+SERIAL No) - FREEWAY PHONE ID (EG 10999+9188)

E				<div>GENERAL NOTES UNSPECIFIED DIMENSIONS ARE IN mm</div> <div>ASSOCIATED DRAWINGS TC-1077, TC-1078, TC-2106 THIS DRAWING IS PART OF STANDARD SECTION 731</div>	CHECKED SP JUN '17		<div></div>	STANDARD DRAWING STREET LIGHTING								
D					APPROVED WH JUN '17			STREET LIGHTING LIGHTING POLE LOCATION IDENTIFIER								
C					CAT Street Lighting PROJ: (a)General FILE: TC-1076.dgn			SCALE OF METRES <div><div></div></div>			FILE NO	CONTRACT NO	SHEET NO	DRAWING NO TC-1076	ISSUE A	
B																
A	ZS	12/23	UPDATED NOTES, REMOVED REFERENCE TO INSTRUCTION GUIDE													
ISSUE	APP'D	DATE	AMENDMENT													



E				GENERAL NOTES / CROSS REFERENCES UNSPECIFIED DIMENSIONS ARE IN mm ASSOCIATED DRAWINGS: TC-1076, TC-1078, TC-2106 THIS DRAWING IS PART OF STANDARD SECTION 731	DESIGNED S P JUN '17			STANDARD DRAWING STREET LIGHTING TYPICAL POLE LOCATION NUMBERING ARRANGEMENT					
D					APPROVED W H JUN '17								
C					CAT Street Lighting PROJ (a)General FILE TC-1077.dgn		SCALE OF METRES HOR  VER 						
B													
A													
ISSUE	APP'D	DATE	AMENDMENT						FILE NO	CONTRACT NO	SHEET NO	DRAWING NO TC-1077	ISSUE



E			
D			
C			
B			
A			
ISSUE	APP'D	DATE	AMENDMENT


GENERAL NOTES / CROSS REFERENCES
UNSPECIFIED DIMENSIONS ARE IN mm



ASSOCIATED DRAWINGS: TC-1076, TC-1077, TC-2106
THIS DRAWING IS PART OF STANDARD SECTION 731

DESIGNED
S P JUN '17

APPROVED
W H JUN '17

CAT: Street Lighting
PROJ: (a)General
FILE: TC-1078.dgn



SCALE OF METRES
HOR 
VER 

STANDARD DRAWING STREET LIGHTING				
STREET LIGHTING POLE LABEL INSTALLATION LOCATION				
FILE NO	CONTRACT NO	SHEET NO	DRAWING NO TC-1078	ISSUE