

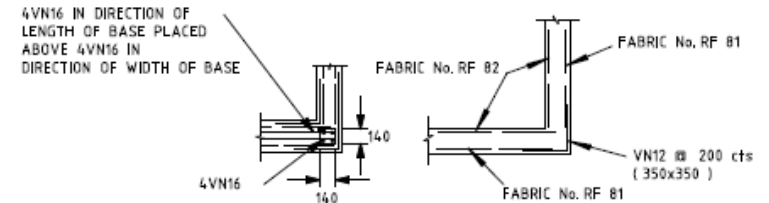
# NOTES:

## CONCRETE

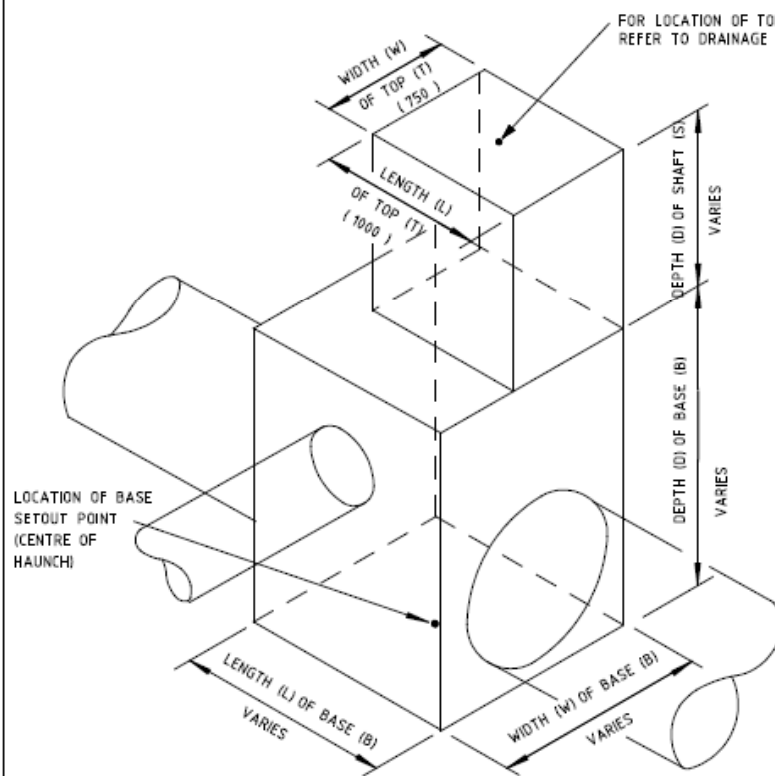
1. CONCRETE STRENGTH GRADE SHALL BE N32 STANDARD STRENGTH CONCRETE OR HIGHER COMPLYING WITH THE REQUIREMENTS OF AS 1379
2. ALL CORNERS SHALL HAVE 20x20 mm FILLETS OR CHAMFERS UNLESS NOTED OTHERWISE.

## REINFORCEMENT

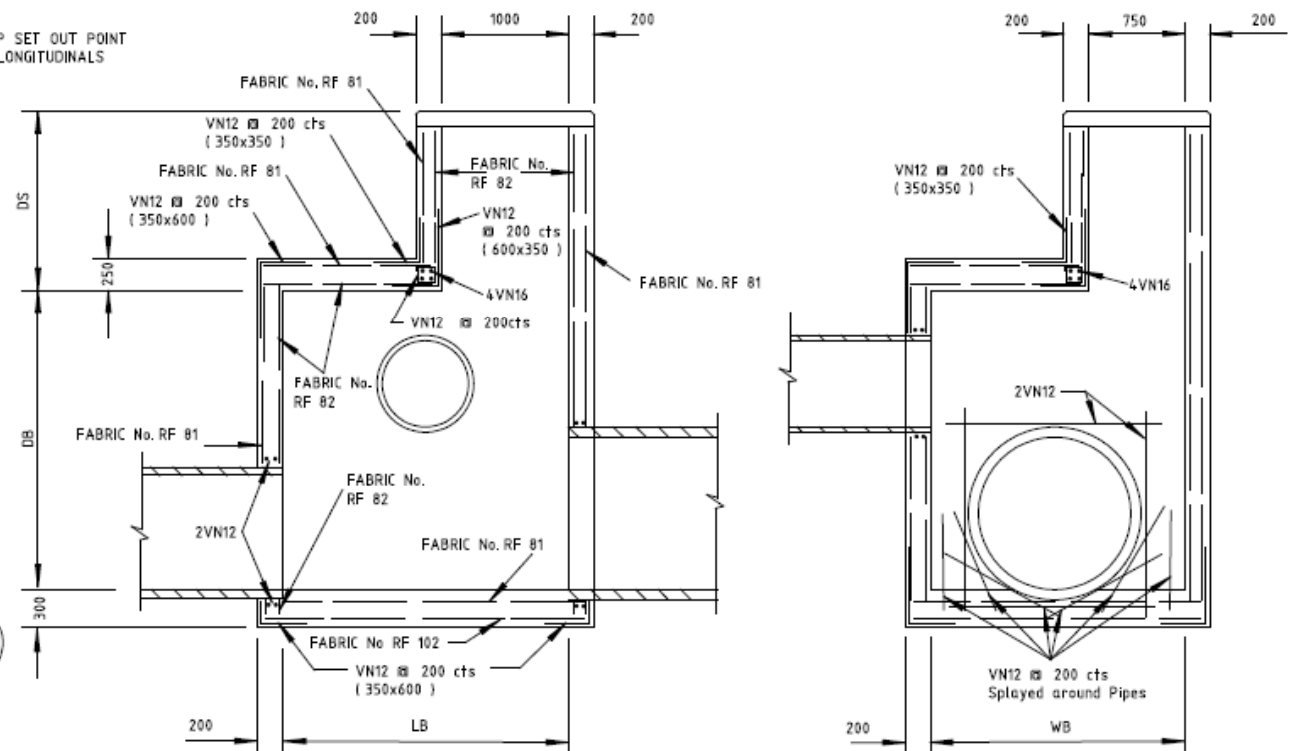
3. COVER - 35mm UNLESS NOTED OTHERWISE
4. SPACING - TAKEN AS EQUAL UNLESS NOTED OTHERWISE
5. GRADE - 500(VN) TO AS/NZS 4671
6. WELDED WIRE REINFORCING FABRIC SHALL COMPLY TO AS/NZS 4671
7. WELDING - SHALL NOT BE PERMITTED UNLESS NOTED OTHERWISE
8. TREADS - FOR STEP IRON DETAILS REFER STD.DRG.NO. SD1041
9. STEELWORK SHALL BE HOT DIP GALVANIZED AFTER FABRICATION IN ACCORDANCE WITH AS/NZS 4680
10. STEP IRONS NOT SHOWN FOR CLARITY



CORNER DETAILS - PLAN VIEW



TYPICAL INTERNAL PIT DIMENSIONS



TYPICAL SECTIONS THROUGH PIT LENGTH & WIDTH

DISCLAIMER (APRIL '23): THIS DRAWING IS IN THE PROCESS OF BEING UPDATED. FOR ALL STRUCTURAL REQUIREMENTS REFER BRIDGE TECHNICAL NOTE (BTN) 033: STRUCTURAL REQUIREMENTS FOR REINFORCED CONCRETE DRAINAGE PITS. GEOMETRIC DIMENSIONS SHOWN ON THIS DRAWING MAY BE USED AS A GUIDE AND MODIFIED WHERE NECESSARY TO ACHIEVE COMPLIANCE.

44-1023a.dgn  
30/07/2023 12:45:27 PM

E			
D			
C			
B			
A	J.K.	1/7/05	NOTE 1 AND 8 AMENDED
ISSUE	APPD	DATE	AMENDMENT

GENERAL NOTES  
ALL DIMENSIONS ARE IN MILLIMETRES  
REFER TO DRAINAGE LONGITUDINALS FOR PIT SETOUT POINTS & LEVELS  
REFER TO SETOUT CO-ORDINATES FOR EXACT LOCATION OF PIT SHAFT.  
STEP IRON DETAILS  
PIT COVERS  
SD 1041  
SD 1051

DESIGNED PRINCIPAL ROAD DESIGN ENGINEER  
APPROVED  
Date 1/8/02  
CATALOG PREP  
PROJECT sddgnnew  
FILENAME sd-1023a.dgn



3 PROSPECT HILL ROAD,  
CARPENTARIA, VIC  
3086  
PHONE 03 9350 1000  
FAX 03 9350 1001

STANDARD DRAWING				
DOUBLE HAUNCHED PIT TYPE B				
FILE NO.	CONTRACT NO.	SHEET NO.	DRAWING NO.	ISSUE
			SD 1023	A

SCALE HOR OF METRES VER NOT TO SCALE