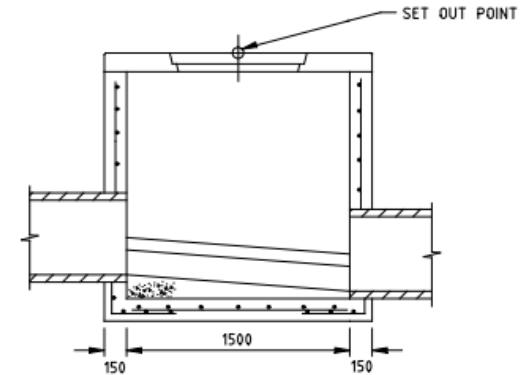
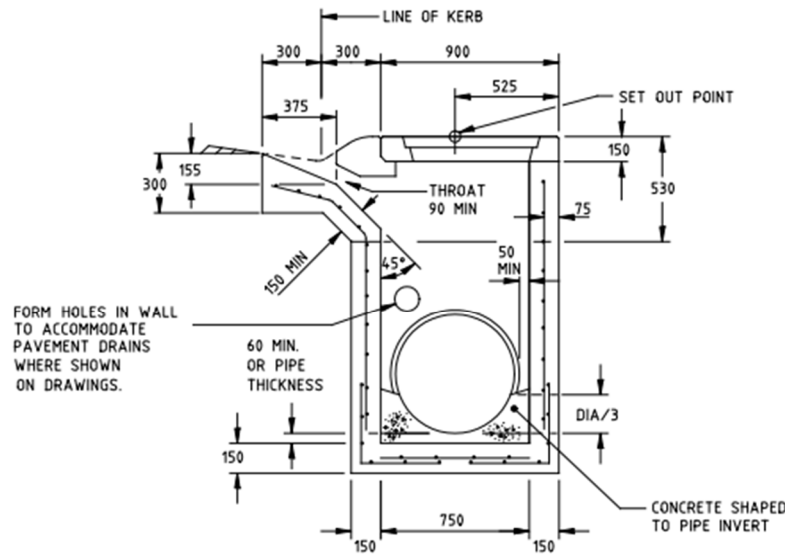


PLAN



SECTION A-A



SECTION B-B

DISCLAIMER (APRIL '23): THIS DRAWING IS IN THE PROCESS OF BEING UPDATED. FOR ALL STRUCTURAL REQUIREMENTS REFER BRIDGE TECHNICAL NOTE (BTN) Q33: STRUCTURAL REQUIREMENTS FOR REINFORCED CONCRETE DRAINAGE PITS. GEOMETRIC DIMENSIONS SHOWN ON THIS DRAWING MAY BE USED AS A GUIDE AND MODIFIED WHERE NECESSARY TO ACHIEVE COMPLIANCE.

NOTES:

1. HAUNCHING MAY BE REQUIRED FOR PIPES OVER 450 DIA, REFER TO PIT SCHEDULE FOR SIZES OF SPECIFIC PITS. PITS WITH HAUNCHING IN TWO DIRECTIONS REQUIRE SPECIAL STRUCTURAL DESIGN.
2. PIT REINFORCEMENT - F918 FABRIC. FABRIC IN SHAFT SHALL HAVE THE MAIN BARS POSITIONED HORIZONTALLY. LAPS TO BE 300 MIN. CLEAR COVER TO BE 50 MIN. CORNER RETURN REINFORCEMENT MAY BE FABRIC OR EQUIVALENT BARS. BARS GRADE 400Y & FABRICS TO COMPLY WITH AS/NZS 4671. CONCRETE SHALL BE NORMAL-CLASS N32 STANDARD STRENGTH GRADE OR HIGHER COMPLYING WITH THE REQUIREMENTS OF AS 1379. EXPOSURE CLASSIFICATIONS UP TO AND INCLUDING B1.
3. PITS DEEPER THAN 1000 SHALL BE FITTED WITH STEP IRONS. REFER SD 1041.
4. CONCRETE FRAMES TO BE SET ON 5 mm OF MORTAR.
5. PRECAST UNITS MAY BE CONSTRUCTED TO THE MANUFACTURER'S DETAILS. THE DESIGN SHALL COMPLY WITH THE AS 5100 BRIDGE DESIGN AND THE FOLLOWING ADDITIONAL REQUIREMENTS :
 - COMBINED FACTORED LATERAL PRESSURE AT ANY POINT AT THE ULTIMATE LIMIT STATE SHALL BE NOT LESS THAN 25 kPa.
 - ADEQUATE DRAINAGE SHALL BE PROVIDED TO PIT WALLS TO AVOID HYDROSTATIC PRESSURE.
 - VERTICAL LOAD 210 kN APPLIED ANYWHERE ON PIT.
 - MINIMUM REINFORCEMENT AREA SHALL BE 150 mm²/m.
 - CONCRETE SHALL BE NORMAL-CLASS N32 STANDARD STRENGTH GRADE OR HIGHER COMPLYING WITH THE REQUIREMENTS OF AS 1379. EXPOSURE CLASSIFICATIONS UP TO AND INCLUDING B1.
6. IN AREAS SUBJECT TO TRUCK LOADING, USE DOUBLE SIDE ENTRY PITS WITH HEAVY DUTY COVERS IN DRAWING NO. SD 1271.

44-5716.dgn 3:48:37 PM 25/02/2006

ISSUE	APP'D	DATE	AMENDMENT
E			
D			
C	J.K.	1/7/05	AS 1902 & 1914 SUPERSEDED BY AS/NZS 4671 AUSTRALIAN BRIDGE CODE 1994 SUPERSEDED BY AS 5100 BRIDGE CODE
B	J.C.	1/2/98	AMENDMENT TO NOTES 2 & 5, CONCRETE STRENGTH GRADES.
A	J.C.	1/9/94	SET OUT POINT COVER INVERT DEPTH, NOTES 2, 4, 5 & 6, GENERAL NOTE 7, SECTION B-B.

GENERAL NOTES	
1. STANDARD PITS DIMENSIONING & SETTING OUT DETAILS	SD 1001
2. UNHAUNCHED PITS	SD 1011
3. HAUNCHED PITS	SD 1021
4. STEP IRONS	SD 1041
5. PIT COVERS	SD 1051
6. LINTELS	SD 1061
7. ALL DIMENSIONS ARE IN MILLIMETRES	

DESIGNED	PRINCIPAL ROAD DESIGN ENGINEER
APPROVED	23.9.94 <i>J. Cunningham</i>
CATALOG PROJECT	PRED sddgnnew
FILENAME	sd-1311c.dgn

3 PROSPECT HILL ROAD, CAMPBELLFIELD, VICTORIA 3085
PHONE 03 951 9911 9915
FAX 03 951 9911 9229

SCALE HOR OF METRES VER NOT TO SCALE

STANDARD DRAWING				
SIDE ENTRY PIT (SM KERB)				
CONCRETE COVER - 1.5 METRE INLET				
FILE NO.	CONTRACT NO.	SHEET NO.	DRAWING NO.	ISSUE
			SD 1311	C